

The logo consists of the letters 'FIS' in a bold, white, sans-serif font with a thick black outline. The letters are centered at the top of the slide.

FIS

FINISHES & INTERIORS SECTOR

Common Compliance Concerns

How can we change our culture to aid compliance

Joe Cilia, FIS Technical Director

Understanding where the risks are – an inspectors view to managing fire risk

Alexander Double BEng(Hons), BA(Hons) Arch, MCIOB, Managing Director, ADDC

Identifying your Programme Risks

Steve Cook, Product Improvement and Innovation Manager, Willmott Dixon

A focus on fire stopping – mind the gap

Andy Taylor, Technical Officer, Association of Specialist Fire Protection



Joe Cilia

Technical Director, FIS

How can we change our
culture to aid
compliance



Alex Double BEng(Hons), BA(Hons) Arch, MCIOB,
Managing Director, ADDC

Understanding where the risks
are – an inspectors view to
managing fire risk



Steve Cook

Product Improvement and
Innovation Manager, Willmott
Dixon

Identifying your programme
Risks



WILLMOTT DIXON

SINCE 1852

Identifying your Programme Risks

Steve Cook

National Product Manager

27th February 2023



IDENTIFYING PROGRAMME RISKS

What do we all need

- Complaint Design & Specification
- Buildable Details
- Up front technical and onsite support from manufacturers
- Accredited installer organisations with a competent workforce
- Programme certainty and right first time

IDENTIFYING PROGRAMME RISKS

Common problem areas that cause delays and rework

- Door Openings
- Fire Dampers and Penetrations
- Fire Protection of Structures
- Change Control

DOOR OPENINGS

Weight of Doorsets not known early enough



Screw Fixing **Embedment** dependant upon doorset manufacturer



DOOR OPENINGS

Door **weights** must be indicated on the door schedule



Wall details specified to suit



50mm deep timber covers most manufacturers



British Gypsum – Door Jamb Details

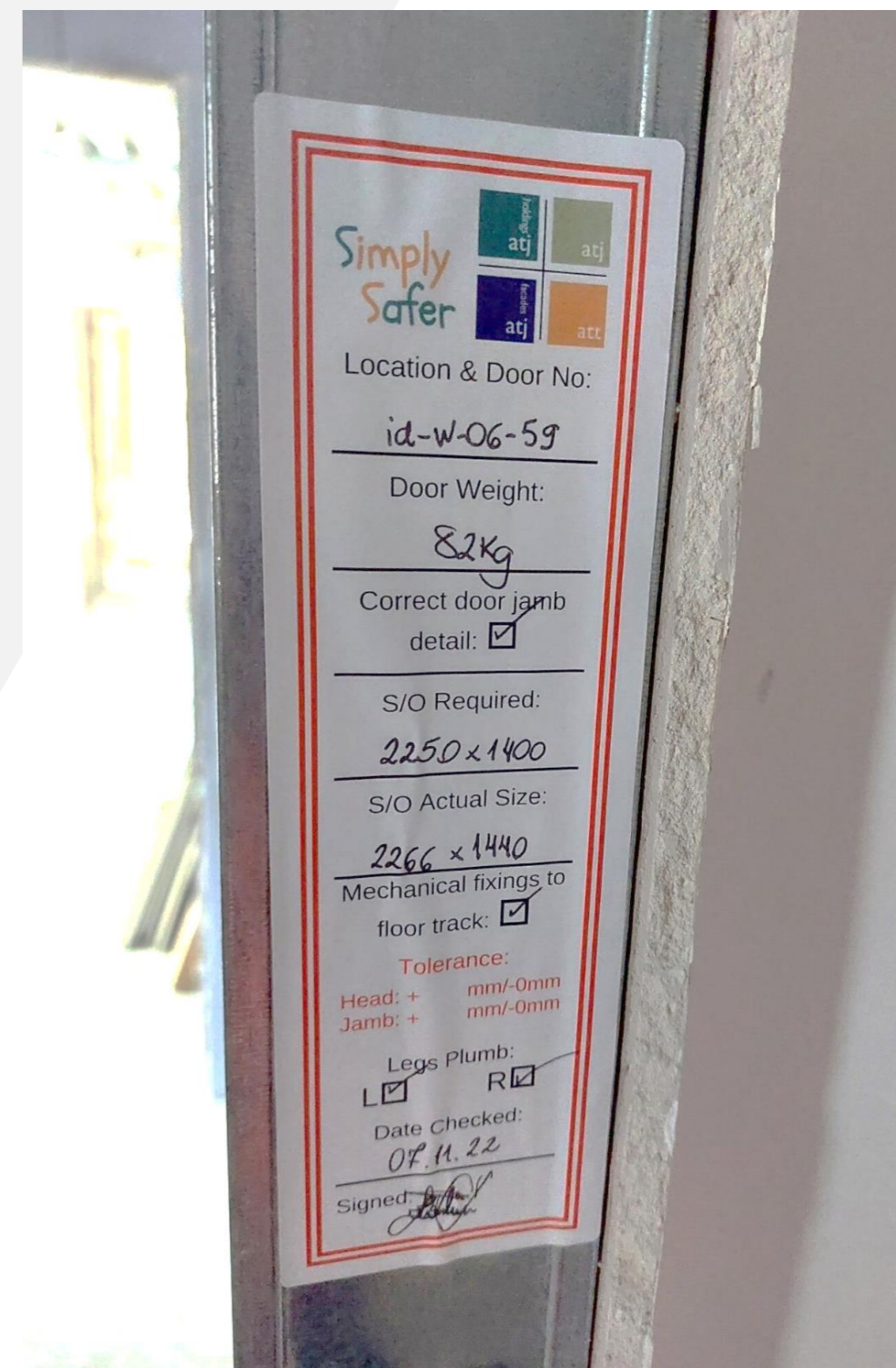
GypWall systems and GypLyner Independent (60Kg Max Width 1200mm) CN-624-001A

GypWall Twin Frame Braced (60Kg Max Width 1200mm) ST-125-Z1L2-04

GypWall systems and GypLyner Independent (60kg Width 1201mm to 3000mm) CN-624-002A

GypWall Single Frame Enhanced Door Opening (120kg 1 layer Max Width 1200mm) – Heavy/Severe CN-122-002A

GypWall Single Frame Enhanced Door Opening (120kg 2 layers max Width 1200mm) – Heavy/Severe CN-121-053A

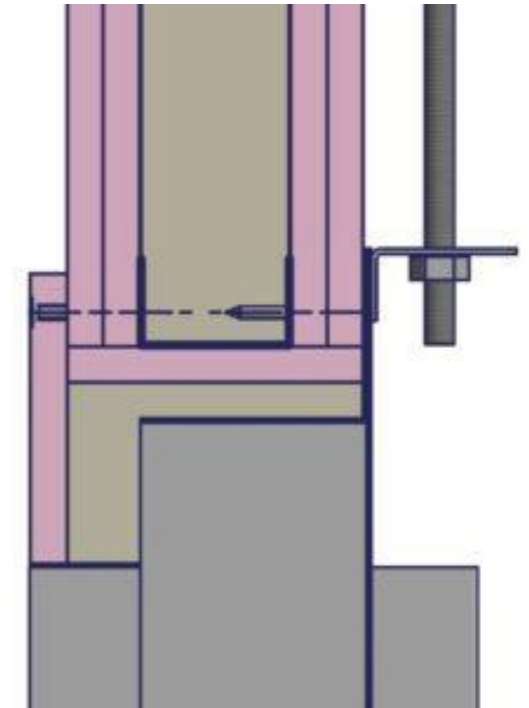
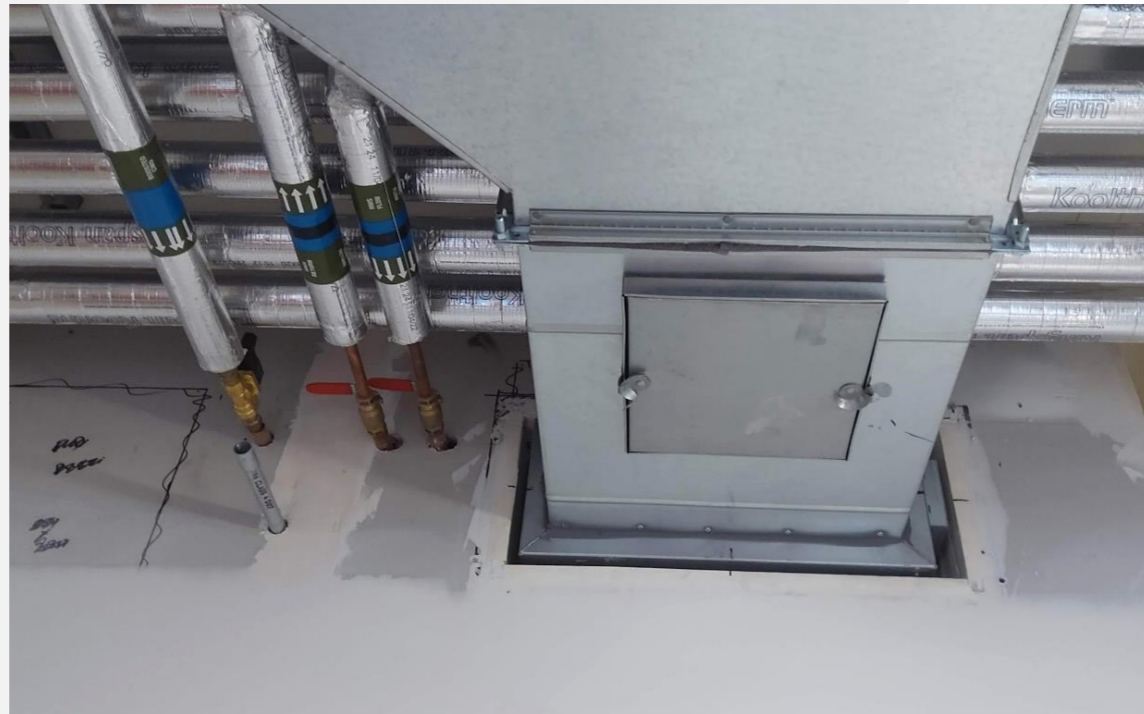
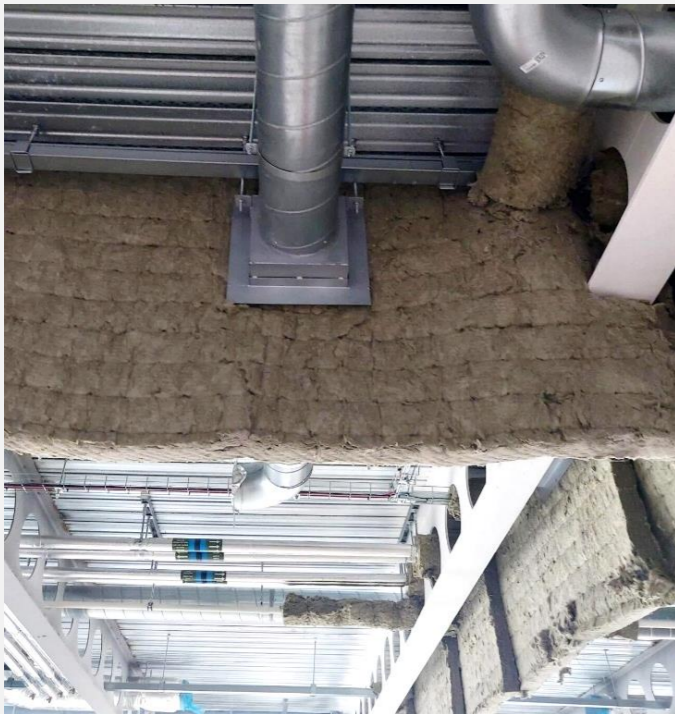


FIRE DAMPERS AND PENETRATIONS

Late selection of actual fire damper to be installed ❌

Insufficient / incomplete **design** (deflection heads) ❌

Some dampers only tested in 120min walls...and not with fire curtains



FIRE DAMPERS AND PENETRATIONS

Common openings with **multiple services** penetrating a single hole 

Space requirements for fire stopping, edge distances 



FIRE DAMPERS AND PENETRATIONS



WILLMOTT DIXON

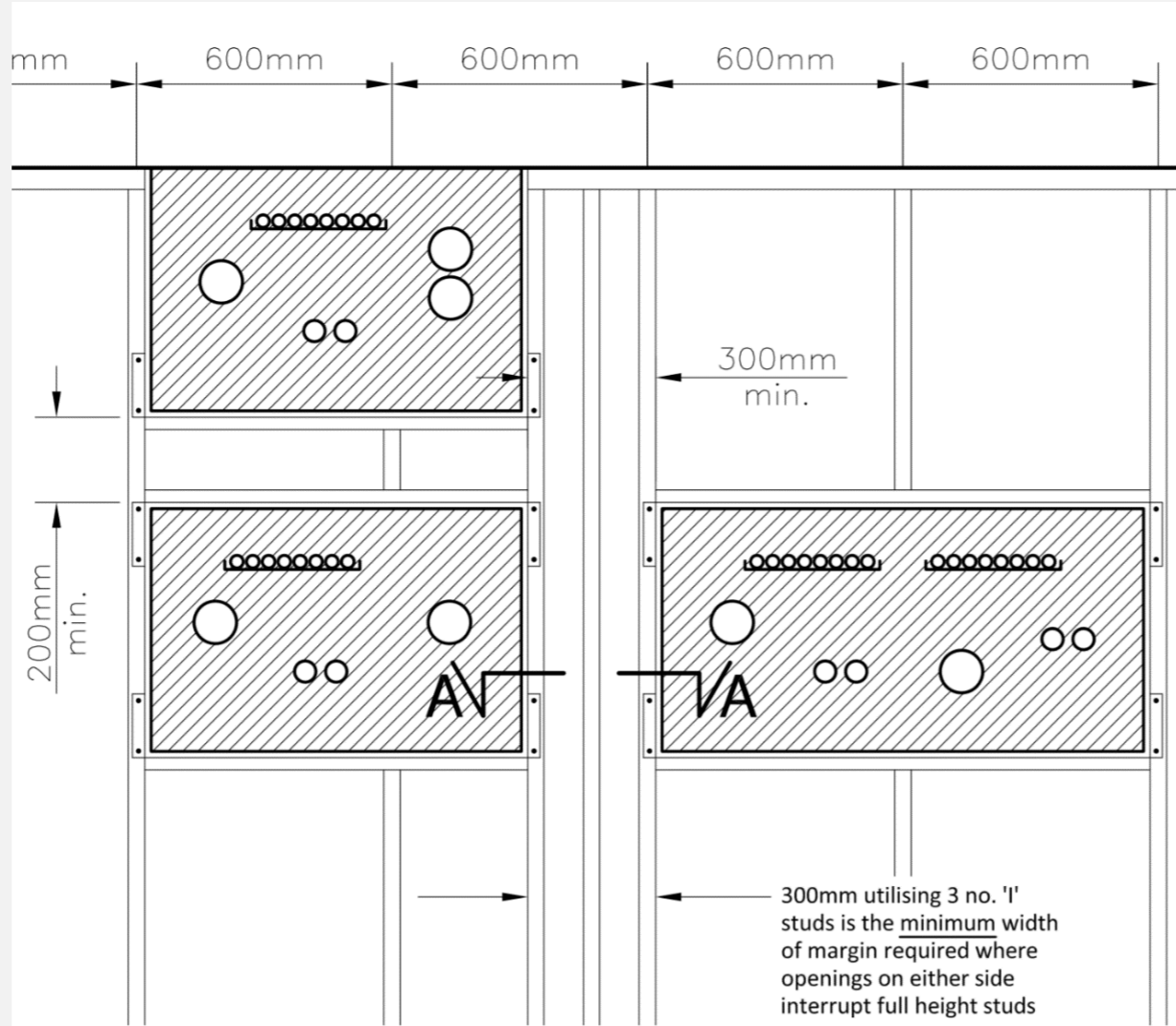
SINCE 1852

Walls must be designed around services, and their tested interfaces



Best practice guidance
Openings within fire rated systems

FRAMED OPENINGS
PARTITIONS
(EXCLUDING SHAFTWALL)



FIRESTOPPING OF SERVICE PENETRATIONS
BEST PRACTICE IN DESIGN AND INSTALLATION

This guide is the result of a collaboration between these not-for-profit associations:

FIRE DAMPERS AND PENETRATIONS

Passive Fire Protection Workshops – Benchmarking and Samples



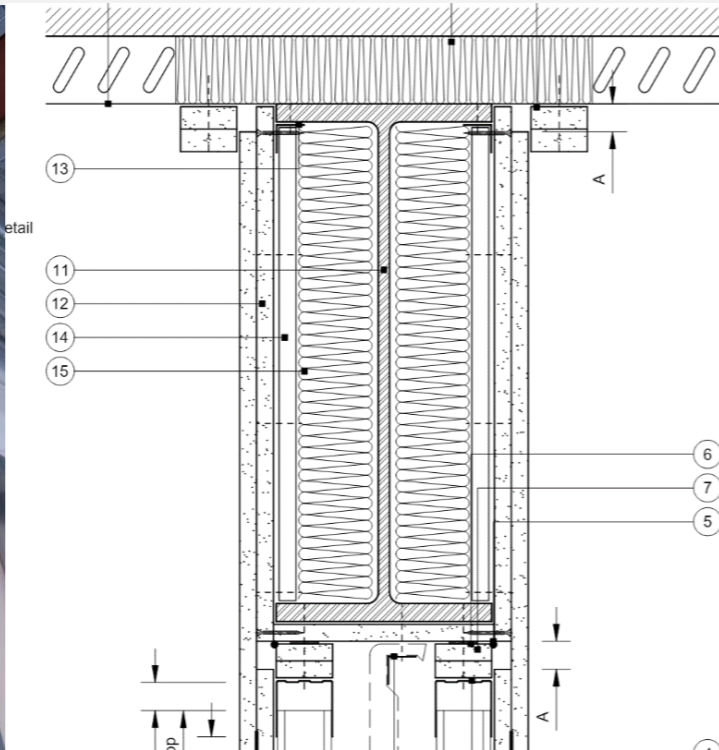
FIRE PROTECTION OF STRUCTURES



Intumescent paint - consideration for **expansion**

Conflicts between acoustics, compartmentation and fire protection

Unresolved **interface** details (encasement, structure & intumescent paint)



FIRE PROTECTION OF STRUCTURES



WILLMOTT DIXON

SINCE 1852



Early identification of encasement system, paint manufacturer, supply chain

Early workshop at stage 3 (with all parties) to agree the strategy



CHANGE CONTROL

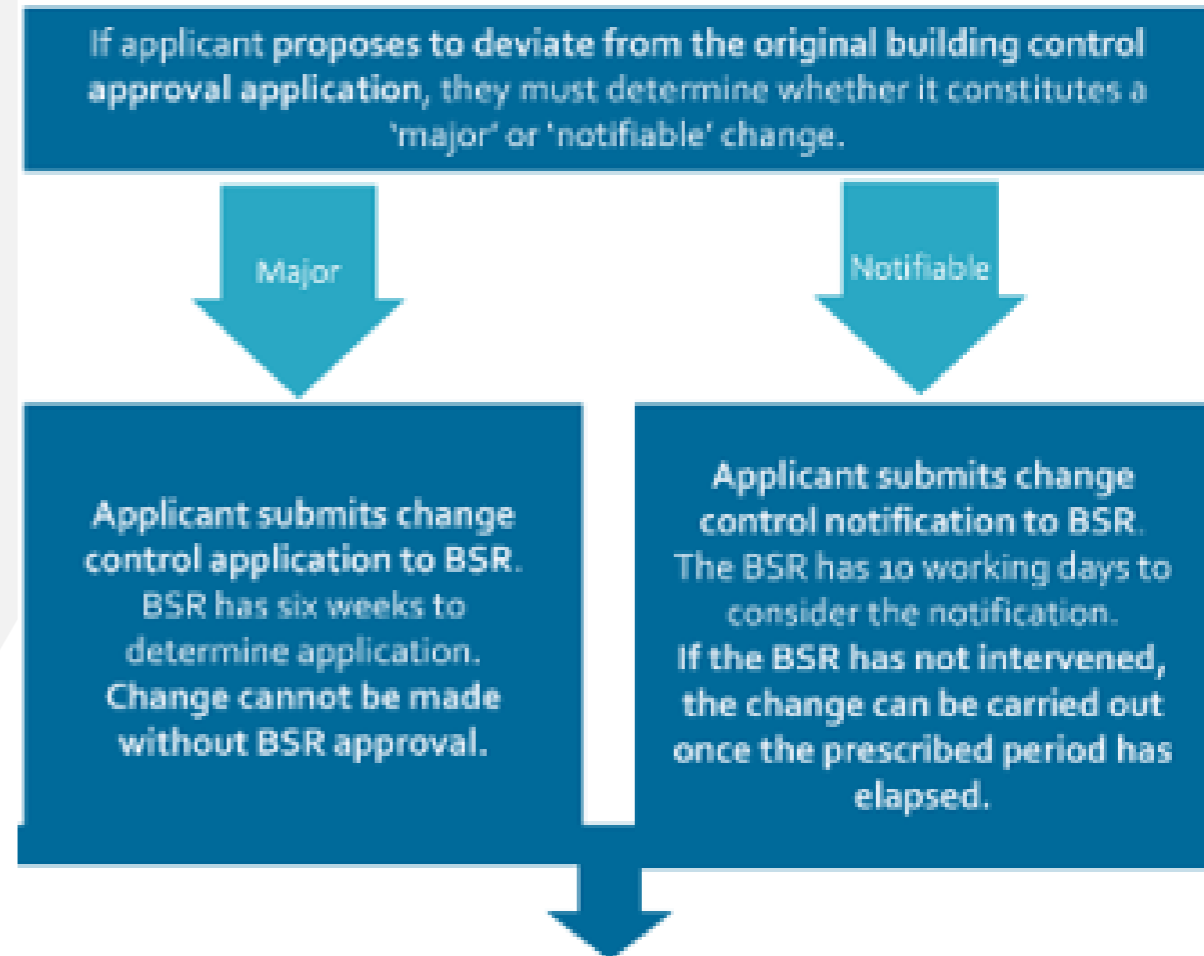
Unresolved details, lack of planning results in delays and changes

Changes take time to agree technically and commercially

If not well managed...

Building Safety Regulator approval will add time and delays

- Major Change - 6 weeks
- Notifiable Change - 10 days





**BY FAILING TO PREPARE,
YOU ARE PREPARING TO FAIL**



WILLMOTT DIXON

SINCE 1852

Willmott Dixon

Willmott Dixon House
80 Wilbury Way
Hitchin, Hertfordshire
SG4 0TP





Andy Taylor

Technical Officer, Association for
Specialist Fire Protection

A focus on fire stopping – mind
the gap

A focus on Fire Stopping –



Andrew Taylor
ASFP Technical Officer

Agenda:

- Quick Bit of History
- The need for Culture Change
- Common challenge with Firestopping
 - Flaws with current practices
 - Regulatory Changes in the pipeline
 - What can we do while we wait?
-



Who are the ASFP?

Originally formed in 1975 in recognition of a need to bring together Passive Fire Protection:

- Manufacturers
- Installation contractors
- Testing/certification bodies
- To encourage, develop and give guidance on essential standards in PFP.

Underpinned by voluntary use of Third Party Certification



Brief Legislative Update

Hackitt Review - Final report 17 May 2018

- Recognised a need for culture change in construction
- Consider fire earlier in design
- Sign off for 'Gateway' steps
 - Gateways 2 & 3 in October 2023?
- Full Plans – end of Design & Build?
- Third Party Certification (products/installers)
- Recommendations on increasing competence.

Building a Safer Future

Independent Review of Building
Regulations and Fire Safety:
Final Report

May 2018
Dame Judith Hackitt DBE FREng

Cm 9607

It is clear as I continue to meet with various stakeholders that the level of activity is rising in preparation for the new requirements and responsibilities under the Building Safety Act.



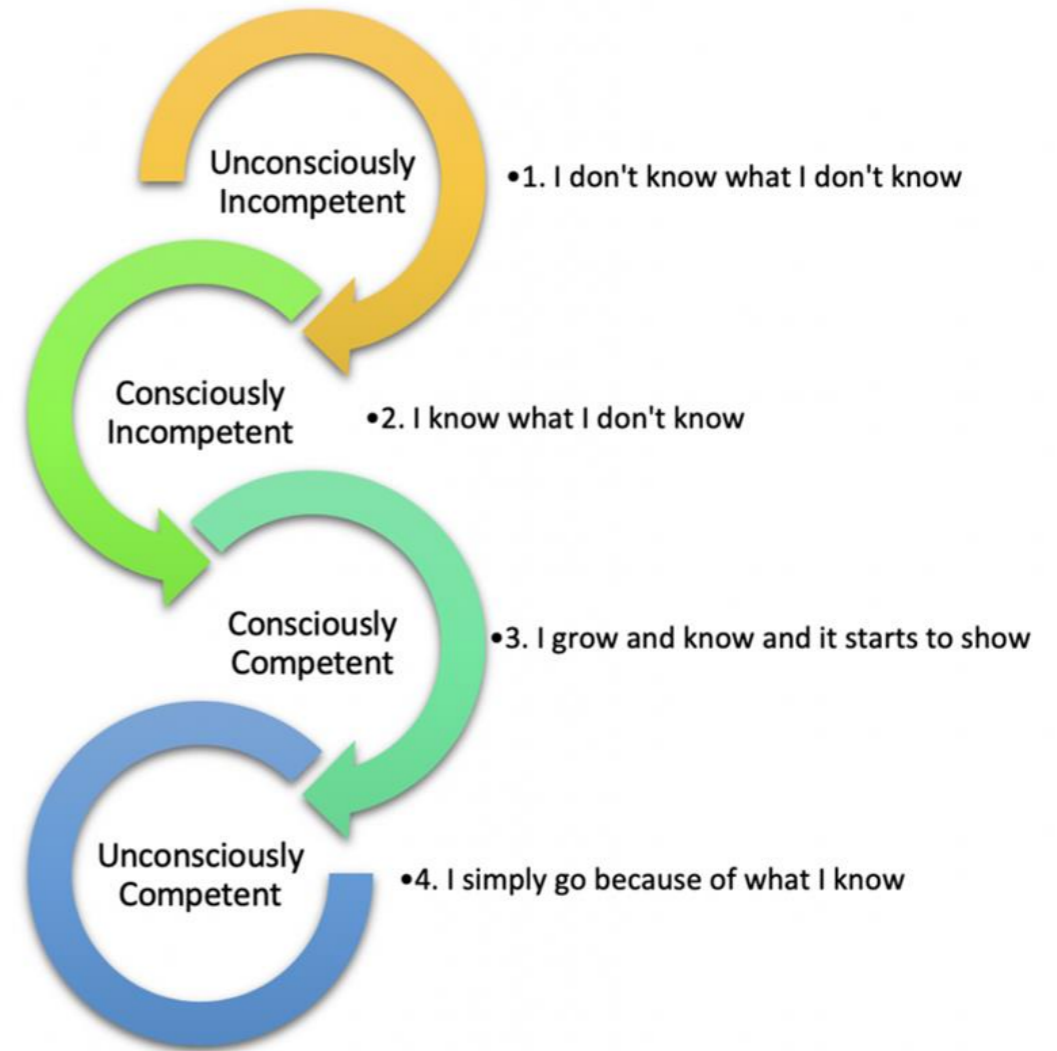
Consultation on secondary legislation is moving at pace bringing the clarity required for many who will have new responsibilities.

2023 really is the year to stop seeing building safety as a regulatory compliance issue and join the group of leaders who understand both the moral imperative, and also the market advantage opportunity, of doing the right thing.



PFP Market Competence....

- Lots of people have recently moved from stage 1 to stage 2.
- Where risks were ignored, now more risk averse
- Still see Pink foam seals on linked in....

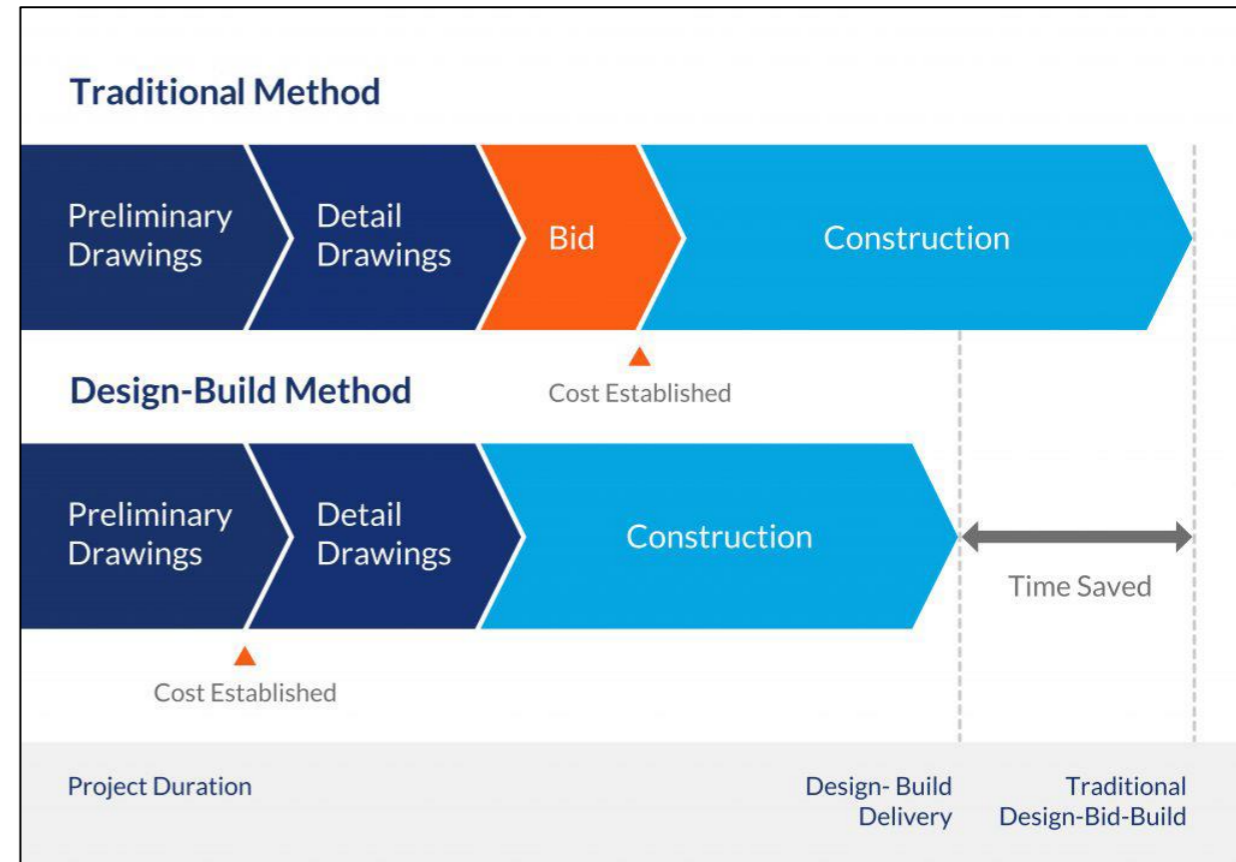


We are still seeing examples like this on Linked in - Why?

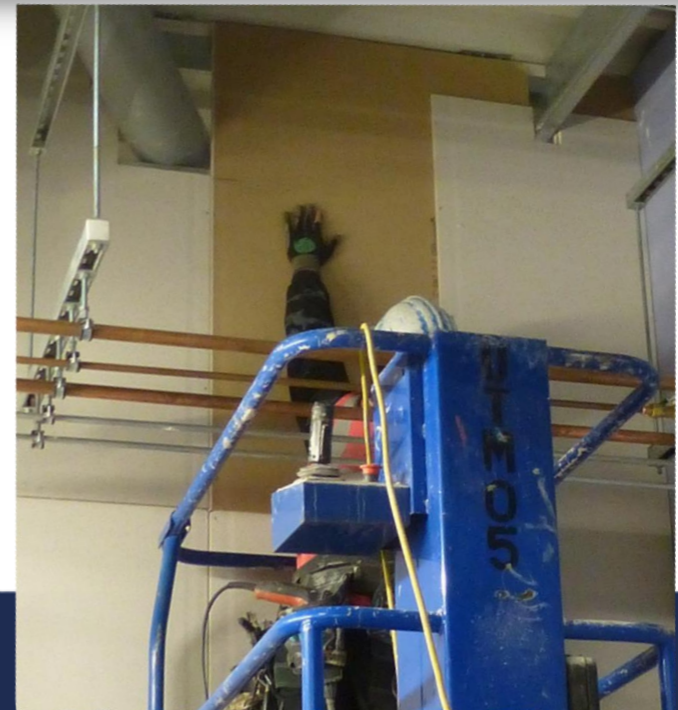
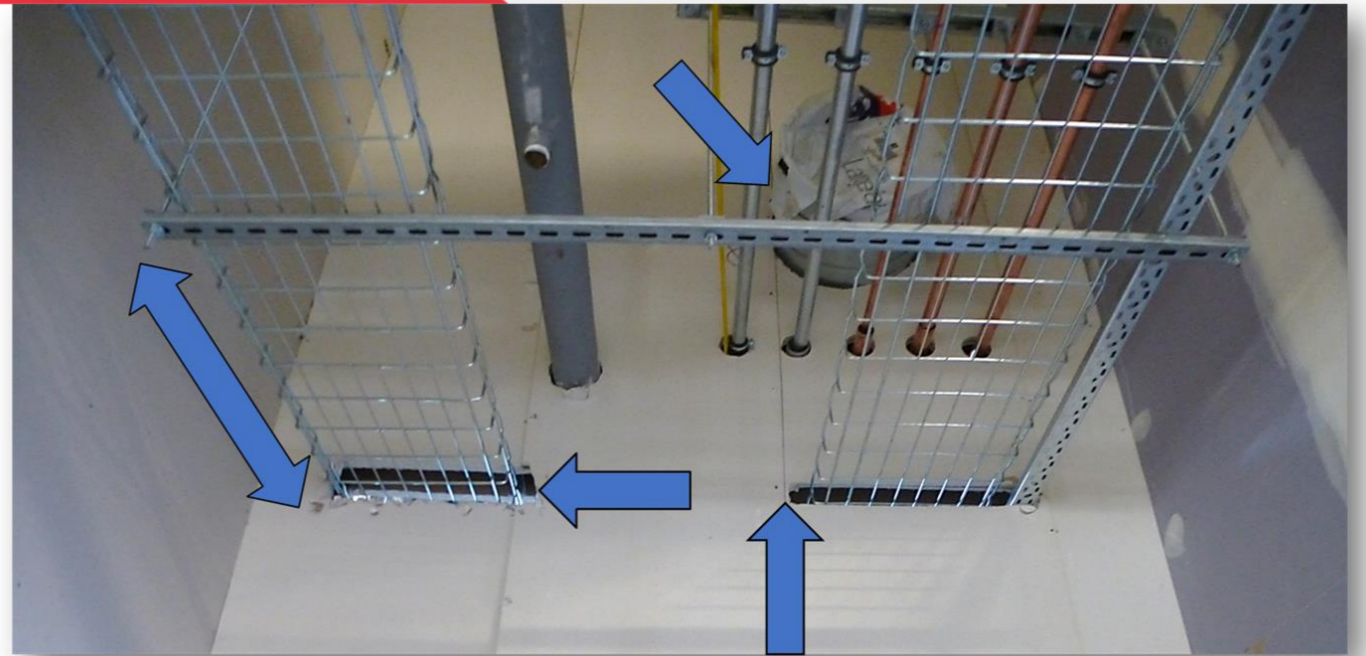


When to involve fire specialists?

- Design & Build projects lead to late design
- Typically, Specialist contractors, MEP contractors & fire sub contractors are still doing design work after construction has started.
- Gateway 2 will require full plans (RIBA 4)



Design doesn't always help



What about this one ?

- Mixed penetrations of pipes and cables are OK....
- But no current standard covering combined penetrations of pipes and cables with ducts and/or dampers
- Gateway 2 will highlight this before it is too late



When to involve fire specialists?

- **ASFP BESA FIS BSRIA GPDA Best Practice in designing and specifying Firestopping**
- Prepared by a collaborative approach to resolve why Firestopping failures occur on site
- Launched in Sept 2020, advises that firestopping is considered earlier and greater depth in design process



• ASFP BESA FIS BSRIA GPDA Best Practice in designing and specifying Firestopping

- Helps with a series of 37 questions
- 7 about supporting construction
- 3 about the opening
- 24 questions about the service

- Available to download at www.asfp.org.uk



• ASFP BESA FIS BSRIA GPDA Next Collaboration

- QR Code linked to loads of info if you are about to pass a service through a fire wall.
 - Stop
 - Think
 - Plan
 - Check
 - Record

WARNING!

**THIS IS A
FIRE WALL
FORMING A
COMPARTMENT**

Cutting or drilling holes through it may allow smoke and fire to breach the compartment leading to loss of life.

Follow the QR code for advice and refer to the O&M manual before proceeding.



ASFP
FIS GPDA



Passive Fire Protection

Since its inception ASFP has lobbied for improved standards in installed PFP underpinned by benefits of third party certification.

Future legislation changes will go some way to improve standards in the construction industry

But we should not solely rely on legislation...



- Stop
- Think
- Plan
- Check
- Record

WARNING!

THIS IS A FIRE WALL FORMING A COMPARTMENT

Cutting or drilling holes through it may allow smoke and fire to breach the compartment leading to loss of life.

Follow the QR code for advice and refer to the O&M manual before proceeding.



ASFP
FIS GPDA

RED BOOK
FIRE-STOPPING

Linear joint seals, penetration seals & cavity barriers

4th EDITION

ASFP On-site guide to installing fire-stopping



FIRESTOPPING OF SERVICE PENETRATIONS
BEST PRACTICE IN DESIGN AND INSTALLATION



This guide is the result of a collaboration between these not-for-profit associations:





FIS

FINISHES & INTERIORS SECTOR

Panel Debate

Your panel can be contacted at



- alex@addc-ltd.co.uk
- steve.cook@willmottdixon.co.uk
- andrew.taylor@asfp.org.uk



FIS

FINISHES & INTERIORS SECTOR

We'll be right back