

# FIS

## INNOVATION AWARDS



[thefis.org](https://thefis.org)





# DISCOVER PROTEKTOR

## Sustainable Partition Solutions



The Protektor brand of profiles for Drywall SFS, Plaster and Render has been established for over 100 years and used by the general construction trade internationally.

We take sustainability seriously and MAXI-TEC Drywall is testament to our commitment to reduce CO2 emissions and waste in manufacturing and construction.

Using less material in the manufacturing process when compared to traditional drywall products and reducing energy consumption, waste and CO2 emissions in the process.

To find out how we are committed to help you build sustainably visit [www.protektor.co.uk](http://www.protektor.co.uk) or contact our team on **01562 515200**.





# FIS INNOVATION AWARDS 2023

The FIS Innovation Awards showcase outstanding innovation in the finishes and interiors sector across four different categories: Product Fit-Out, Product FF&E, Digital and Sustainability.

The winners were announced in front of a live audience at the FIS Conference on 27 February in London.

All entries were independently assessed by a panel of expert judges and the winner of each category was announced in front of a live audience at the FIS Conference.

The winner of each category was then invited to deliver a short pitch on their innovation to the audience, who then determined the overall 2023 Innovation of the Year winner.

## ENTER THE 2024 AWARDS

Entry for the 2024 Awards will open in April 2023.

We are on the lookout for innovation that meets a need in the finishes and interiors sector, and has evidence of adoption or planned use in a commercial environment. By innovation, we mean the successful exploitation of new ideas and bringing creative ideas to life.

Our focus is on ideas that help to support improvements in efficiency, productivity, performance, quality or perception of the finishes and interiors sector.

The Awards are open to all companies operating in the finishes and interiors sector, regardless of size. To qualify, innovations should have been introduced to the UK market in the last five years.

Find out more at [thefis.org/membership-hub/fis-awards/innovation/](https://thefis.org/membership-hub/fis-awards/innovation/)



+44(0)121 707 0077  
info@thefis.org  
thefis.org

## JUDGING PANELS

### Digital Innovation

- Chris Grant, Projects & Partnerships Manager, Digital Construction Skills
- Mark Norton, Digital Construction Director, ISG
- Dr Stephen Hamil, Innovation Director, NBS
- Iain McIlwee, Chief Executive, FIS

### Product Innovation - Fit-out

- Peter Morgan, Deputy Chief Engineer, Construction and Infrastructure, MTC
- Chris O'Kane, UK Technical Director, SIG
- Steve Cook, National Product Manager, Willmott Dixon Construction
- Joe Cilia, Technical Director, FIS

### Product Innovation - FF&E

- Vanessa Brady OBE, Founder and CEO, The Society of British and International Interior Design
- Trevor James, Director, Workplace Projects
- Darren Ross-Dreher, Technical Director, QA and QC Ltd
- Jamesina Sainsbury, Director of Consultancy, MCM
- Joe Cilia, Technical Director, FIS

### Sustainable Innovation

- Elina Grigoriou, Design and Sustainability Director, Grigoriou Interiors
- Joe Croft, Head of Environmental and Sustainability, Overbury and Morgan Lovell
- David Wakelin, Director of Sustainability, Gleeds
- Flavie Lowres, Sustainability Champion, FIS

# FireDNA Monitoring Passive Fire Products

**FireDNA is cloud-based software and a mobile app. The system was developed for everyone involved in passive fire product manufacture, installation, inspection, management and maintenance. It also brings benefits to those that live and work within environments where passive fire products are installed.**



Its core objective is to facilitate and deliver structured, unambiguous and accessible data, to the right people at the time that they need it.

FireDNA improves processes by connecting everyone in the chain of responsibility, creating a 'live digital conduit', that gets the right information, to the right people, at the time of need. This in turn helps and supports decision making and improves competencies.

Its software catalogues manufacturers' product data, digitally shares it with contractors and installers. They then add their installation data, passing that onto building owners, facilities managers and tenant management organisations. Data can be used by building control, fire inspectors, maintenance teams, and viewed by

residents, with a simple swipe of a smartphone or mobile device.

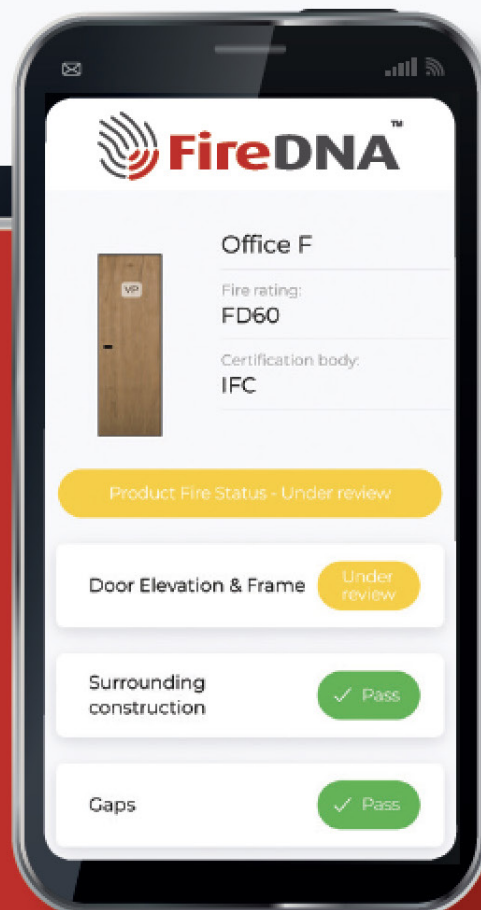
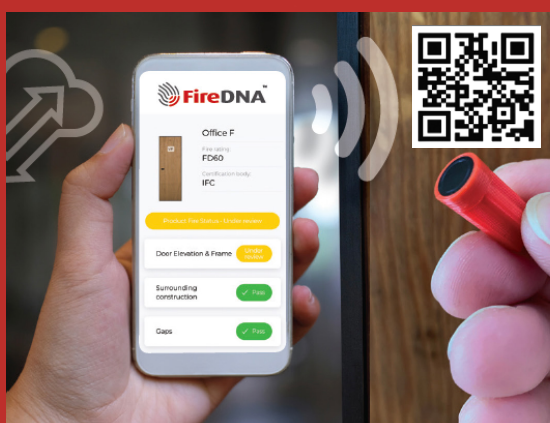
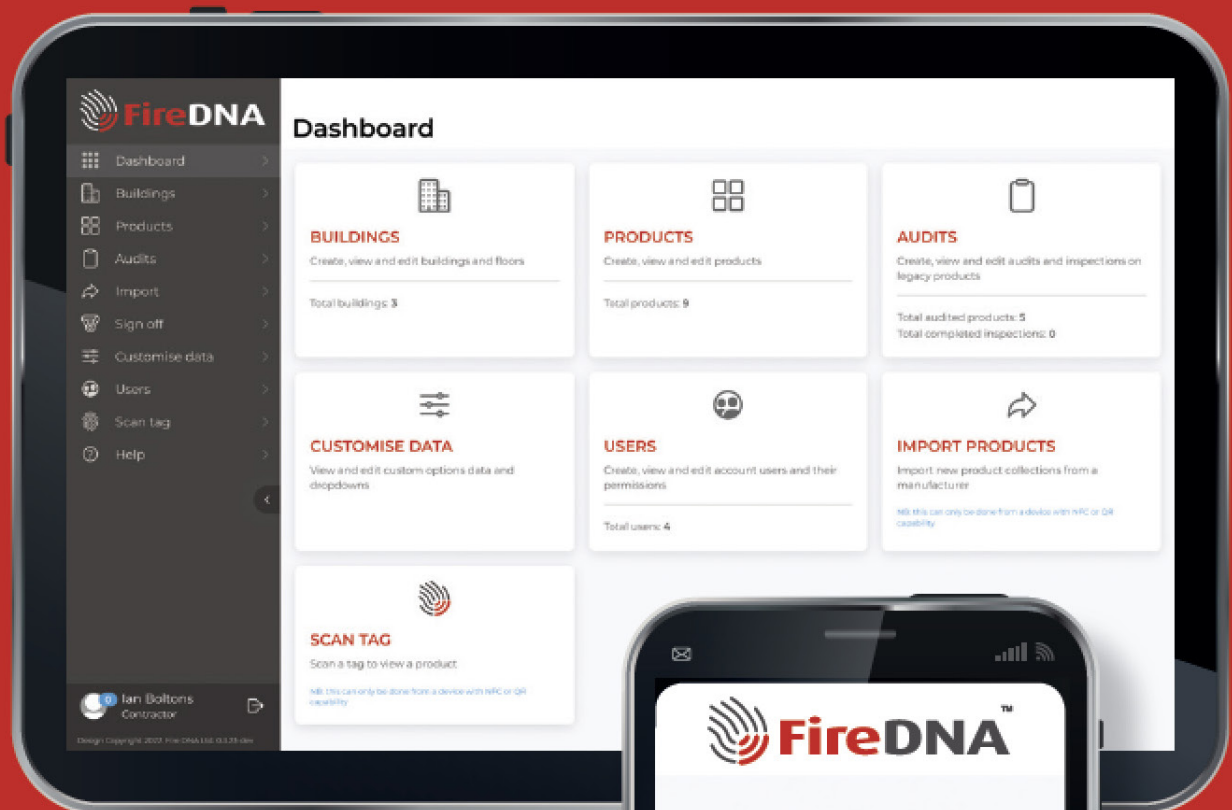
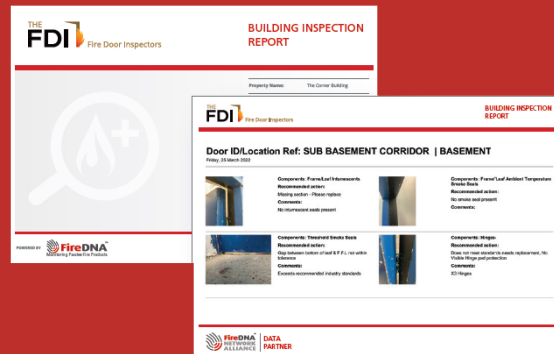
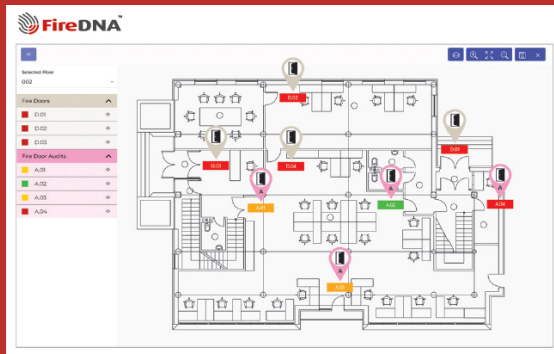
FireDNA delivers time efficiencies and cost savings for all user groups. Architects and designers can specify FireDNA enabled products from accredited manufacturers and suppliers, knowing that all the relevant safety and procedural data and information will be readily available - digitally attached to the product on delivery, and accessible via the cloud.

For manufacturers, it streamlines the 'paper trail' - reducing the need for printed certificates, installation guides and DoPs - saving money otherwise spent on printing new and replacement certificates.

For contractors and installers, it saves time and money when it comes to providing evidence that installations have been performed in accordance with the required level of competency and standards. This is achieved by cataloguing the installation as it's undertaken; it enables the installer to photographically capture key aspects along with supporting notes. This is particularly useful where elements of the installation are no longer visible when completed.

The judges said that this product has a huge potential to help support information management through the entire supply chain for fire critical products such as fire doors. With 'golden thread' at the forefront of current thinking, it is exciting to be presented with something that has sought to understand the journey of the product, and the needs of people at each stage, as it leaves the manufacturer right through to when it is inspected in a live building.





# Chalkstring

**Chalkstring is a cloud-based cost management software platform. The brainchild of Product Director Stuart Friend (with a background in construction law) was horrified that multi-million-pound construction contracts are often managed using the 'back of a fag packet'.**

Developed entirely for interior fit-out contractors, it improves on how complex project financials are managed from initial pricing through to final account.

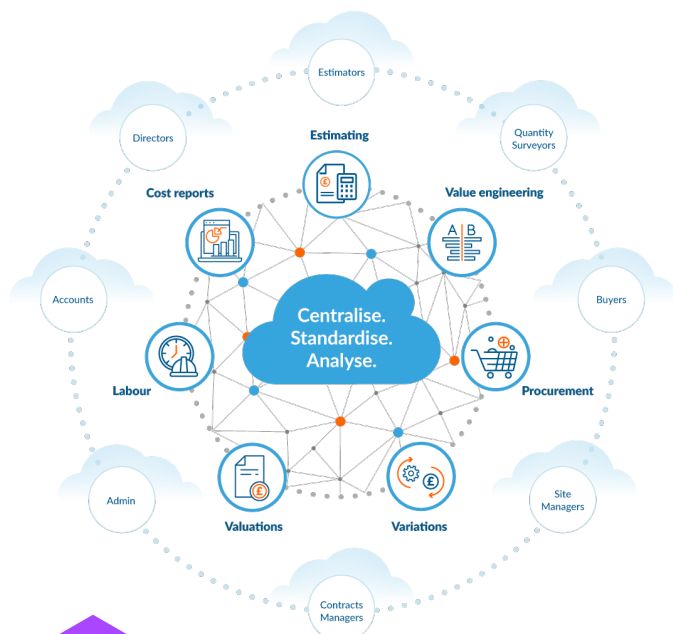
At high level, Chalkstring is an integrated system that encapsulates the entire project lifecycle from estimating and takeoff, through to procurement, valuations, real-time reporting and much more. It is used as a collaboration platform by the whole project team, typically



comprising estimators, buyers, quantity surveyors, commercial managers, directors, admin/accounts teams - and even site staff - streamlining processes and improving efficiency across the entire business. Features include real-time reporting, an integrated labour app and final account projections.

Key benefits revolve around a 'centralise, standardise and analyse' philosophy:

- Centralised project data, accessible to everyone, on or offsite and in real-time
- One consistent system for the entire team across all project stages
- Defined processes and standardised documentation across the business
- Instant real-time 360° view of project commercials
- Compliance with quality procedures to support ISO accreditation
- Ability to control and analyse spend better, eliminating over-ordering and overpaying
- Ability to make informed decisions confidently and before it's too late.



The judges felt that Chalkstring demonstrated an in-depth understand of the market. Chalkstrings work with stakeholders developed an end-to-end product that satisfied requirements, with an important feedback loop. This resulted in a well-rounded product, addressing an industry need.



# Errigal Contracts/Mafic FAIRPAY

**Recognising the challenge of trying to recruit and retain good people, particularly in the current market, Errigal collaborated with Mafic and introduced its innovative technology to transform how companies engage, motivate and reward their tradespeople.**

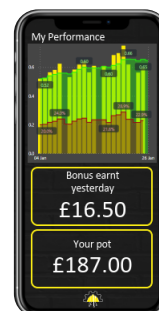
Mafic's wearable FAIRPAY devices recognise what activities the wearer is performing from the movement of their head to a very high level of accuracy. The user is presented with a productivity score for the day, and indicators for where they can improve – a bit like a construction version of a Fitbit, but much more accurate.

With FAIRPAY, individuals can understand if they've had a good or bad day, and why. To complement this, Errigal added a performance-pay scheme that gives everyone the chance to earn up to 10% more based on a combination of individual and team performance.

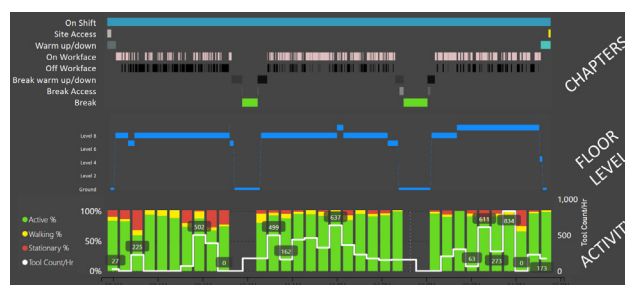
Errigal reports seeing a huge change in operatives' attitude onsite, with a massive improvement in both engagement and productivity. On average, people are 10-15%

more efficient, as everyone gets feedback on how they are performing and develops interest in their 'numbers'.

In addition to improved motivation, the anonymised and aggregated data from the system provides powerful management information. It shows productivity trends which give early warnings of problems and, importantly, an understanding of where time is being lost. By analysing how quickly people get tired over the workday, Errigal has also been able to optimise its shift patterns to reduce fatigue – a change that has given a 6-8% improvement in productivity.



The judges commented that this was an innovative use of technology to improve business performance and that the vendors had demonstrated an excellent understanding of the customer/client needs.





# eekowall

**eekowall is an advanced drylining system, designed to achieve the highest levels of fire, acoustic and stability performance with virtually no waste materials produced onsite. It has been developed for high-density, mid-to-high rise residential and student accommodation schemes and can also be used for housing development.**

eekowall panels are manufactured offsite within strict QA procedures, so there is no risk of hidden construction defects affecting the performance of the completed partitions and linings. They can be installed extremely quickly, considerably reducing the number of operative hours required on site. This also simplifies and speeds up the site management and QA procedures, as the partitions framing and fixings etc are pre-checked in the factory and are guaranteed to be correct.

The project's 'golden thread' for design is also protected, as the fire rated partitions and linings are constructed under controlled conditions, with no risk of mixed brand materials being introduced to fire rated systems during the construction phase.

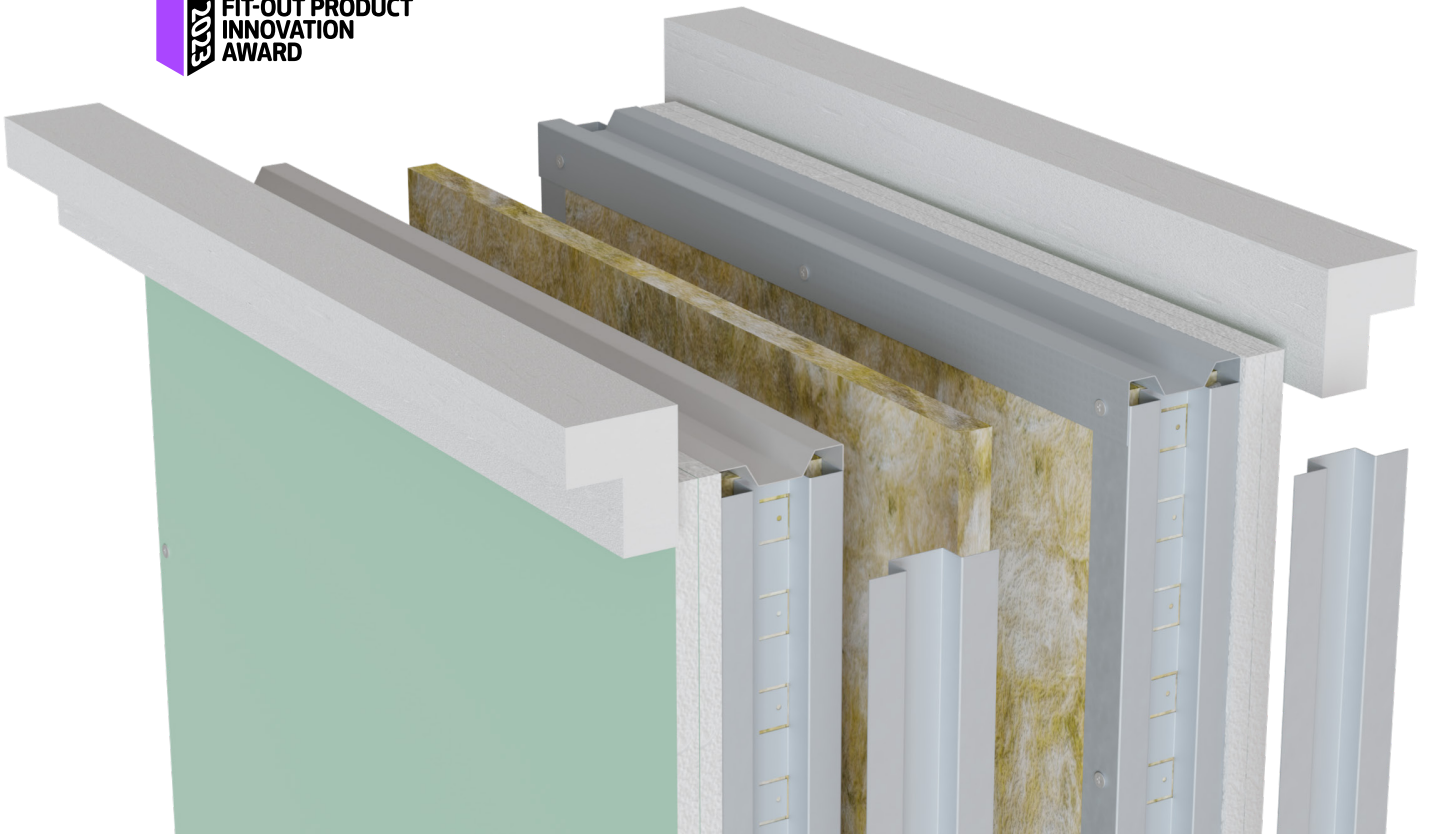
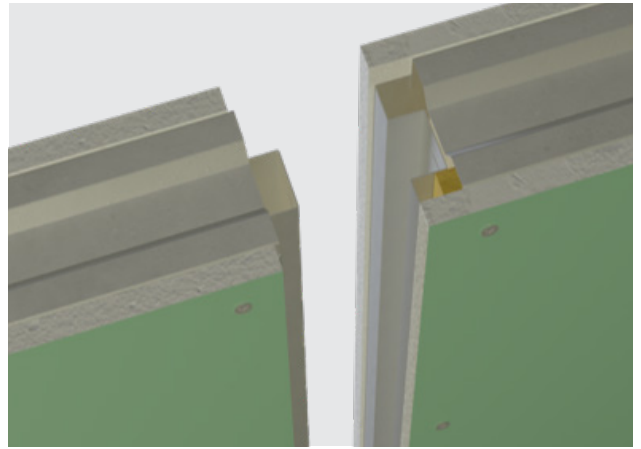
The deflection head details have been designed to avoid any unfixed contact between metal components, removing the risk of 'creaking building syndrome' from the partition heads, making eekowall panels the perfect choice for high rise residential towers.

eekowall systems are certified as non-combustible by Warringtonfire, so they can be installed as part of the external wall system and can meet the increased acoustic requirements typically required on today's high-end developments.

The company states that it drives better outcomes and predictability on cost, speed, and reliability, working to a 60:60 principle - 60% less labour and time compared to traditional drylining and eliminates waste on site from 35-40% (traditional) to less than 1%.

The judges commented that this new product not only delivers a fast build, but it also delivers consistency through a quality control process in a factory. This ensures that the components are correctly installed as the product was tested, and that the offcuts usually associated with a traditional build are managed in the factory process.





# Drywall Pro-Cut

**Drywall Pro-Cut makes essential drywall components such as deflection heads, builders work openings and door sets, in an offsite facility to improve precision, quality and installation time onsite. Produced by specialist laser guided machinery, the ready-to-fit parts are delivered to site and used in the construction of walls requiring crucial fire, acoustic and structural properties.**

Partnered with a drylining and fit out contractor in the Midlands, it has been developed over the past six years with input from manufacturers, specifiers and installers, all with the same goal of improving efficiency, quality and the peace of mind of knowing crucial elements will maintain integrity.

Key benefits of the products are reduced installation time, improved health and safety and less waste.

Producing these labour-intensive products offsite reduces the volume of site operatives required. This, in turn, reduces the time required on site for installation. Studies carried out by the company show that utilising Drywall Pro-Cut components can reduce programme time, or labour levels on site by 31%.



It reduces the need for cutting stations and associated trailing leads and dust production and saws and knives both on and off site, creating a safer environment and a tidier workplace. And by producing products offsite, greater control over waste levels is achieved, with off-cuts reused wherever possible.

The judges said that this was a fantastic approach that added wide benefits to the metal stud industry, including giving specifiers and building owners confidence of a compliant detail and speeding up a laborious site process.



# Siderise MC Mullion Overclad

**The Siderise MC Mullion Overclad is a decorative mullion liner designed to provide a simple yet robust solution for enhancing the acoustic performance, or acoustic and fire performance, of curtain wall façade systems.**

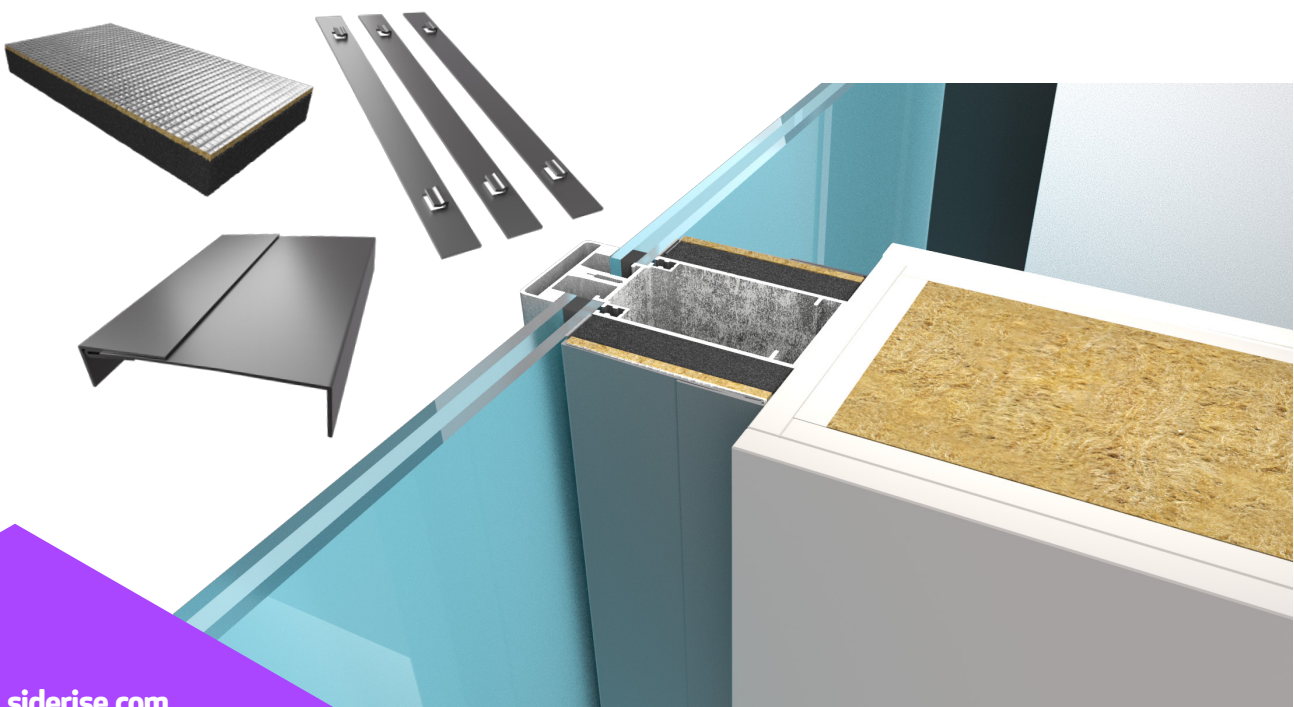
An external treatment, it is installed over the top of curtain walling mullions where partitions abut. This substantially improves acoustic performance, with acoustic only and acoustic plus two-hour fire rated versions to choose from.

Suitable for both 'stick' and 'unitised' curtain wall façades, the system is ideal for projects where internal acoustic upgrades to the mullion are not practical. This includes situations where the internal layout is unknown during construction or when fit-out or operation has already begun.

Its simple installation process allows it to be installed quickly with minimal disruption to occupants and without the need to empty spaces of furniture, etc.

The product has successfully achieved a two-hour fire resistance EI, and significant improvement in the sound transmission performance of a hollow mullion, typically achieving circa 24dB  $R_w$  empty and with the Siderise MC increasing to circa 44dB  $R_w$ . With the Siderise MI6 included an overall performance of 52dB  $R_w$  is achieved.

The judges loved this self-finish, fire and acoustic tested product, commenting that it provided improvements in a big area of snags and a hard to finish element.



# Rockfon® Lamella

**Rockfon® Lamella is a modular slatted wood acoustic wall system which provides Class A sound absorption for commercial projects.**

While developing the product, Rockfon's innovation team interviewed over 30 installers, specifiers and end-users to identify the pain points with existing wood panel products. The result was a product that has the convenience of highly standardised panels but has a range of slats in different colours and dimensions which offers 650,000 design combinations.

The slats come in boxes of 10, which means mixing and matching is both highly flexible and affordable. Each individual lamella is mounted onto a platform which contains specially designed charcoal Rockfon Sound Absorbing Panels, providing the system with outstanding sound absorption properties.

It combines the beauty of wood with Rockfon's stone wool sound absorbent panel, creating calm interiors, from open plan, quiet to higher energy collaboration zones.

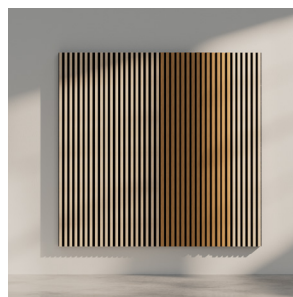
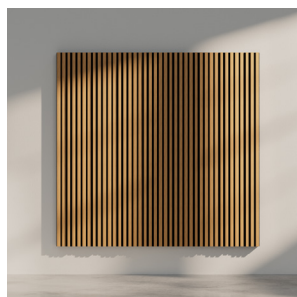
The product has clear, transparent performance test data for the whole system (not just individual components): the wooden slats, mounting profiles, sound absorbing panel and components.

Specifiers can be confident the product provides:

- Acoustic performance - Class A sound absorption in accordance with ISO 11654
- Reaction to fire performance: classification of c-S2,d0 in accordance with EN 13501

To execute a speedy specification, all specification data, BIM Objects and CAD drawings are available on NBS Chorus, NBS Source and pCON.

The judges commented that this was a quality looking product that has a real purpose, providing an alternative, sustainable and attractive solution to acoustics.









## Yo-Yo POD®

**Inspired by wellness at work and the drive for improved sustainability for office furniture, the Yo-Yo POD® is a mobile, modular and multifunctional acoustic booth.**

The pod sits on industrial strength castor wheels with Quickclick™ brakes so can be moved into position in seconds and has been designed to fit under the commercial door heights in the UK and EU.

It can be moved around for meetings, focus work, zoom calls or as a sound partition to create a versatile, inclusive and agile workspace and is configurable for two, four or six people.

Manufactured in the UK, Yo-Yo POD® delivers on multiple sustainability credentials. The fabric is made from 100% recycled materials, and it is designed to be easily re-upholstered and recycled – both carcass and fabrics can be easily dismantled and replaced. The hardwood ply carcass frame is made from British deciduous trees and FSC certified, and it is constructed using water-based adhesives in a solar power factory.

The judges were impressed by the thought that had gone into this product and its sustainable credentials.



# Wiesner-Hager yuno office

**A temporary and flexible office desk solution, yuno office meets the demands for flexible co-working spaces for mobile easy to store workstations. The yuno office tables stack neatly away on a transport trolley, making it easy to wheel away and store.**

Yuno office features a special plug-in box, docking onto the worktop, making it a supportive workstation when needed. The plug-in box provides an accessible desktop power module and also acts as personal storage for stationery and valuables.

The judges said that yuno office has everything - including style, nice detailing (including the wheels), simplicity of design and flexibility.





# Adaptavate Breathaboard

**Breathaboard is a direct, drop-in replacement for plasterboard. It has been developed to be installed in the same way on non-load bearing partitions and other applications and is a key part of building materials in mainstream markets in achieving a cost effective, circular, decarbonisation of the global built environment.**

Developed over the last seven years in response to decarbonisation, the product doesn't use gypsum, but instead uses an entirely ecologically regenerative process transforming food-crop wastes into a product that absorbs waste carbon dioxide through the industrial process, making use of low-grade CO<sub>2</sub> emissions. This results in around 3kg CO<sub>2</sub>/m<sup>2</sup> lower than plasterboard. It is also 20% lighter and has two times the thermal performance.

It is called Breathaboard, as it breathes with the people in the building, helping to reduce mould and condensation in the built environment. There is no waste or cost of disposal at the end of life or from off-cuts as it is entirely compostable and can be used to restore soils or create renewable energy.

Breathaboard is a revolutionary innovation to address the waste, resource security and health of the construction sector. Adaptavate is currently working hard to validate and test the scalable and continuous production process so that it can hit the market at scale, to ensure the impact that it set out to achieve.



The judges commented that the Breathaboard product and process of innovation are both breaking barriers with industries coming together, solving a waste problem, creating circularity and bringing in science. With no real route for recycling plasterboard, this 'eco-friendly' lightweight, low embodied carbon product, which is compostable, ticks all the sustainability boxes.







# Architectural Wallsz Prefabricated Solutions

**Architectural Wallsz designs and installs specialist prefabricated wall systems for the healthcare, educational and the commercial sector. It uses innovative offsite fabrication techniques to manufacture partitioning, allowing the walls to be fully relocatable and reconfigurable in line with any future changes to their application. This gives the product a longer lifespan, meaning the materials and fixings are prevented from entering landfill and reducing the overall lifespan cost.**

It marries technology and construction through a software called ICE, a unique programme that carries a client's intent through to jobsite installation; any changes made to the design can be instantly drawn in, automatically updating - in real time - a rendered 3D view, bill of materials, project cost and engineering/installation reports.

AWallsz Prefabricated Solutions allow clients to visualise the outcome of their specification. Changes can be made prior to materials being cut, reducing the amount of immediate waste. Manufacturing is offsite, minimising installation time spent onsite. It uses a large number of recycled materials and is fully reusable and reconfigurable, maximising its overall lifespan which, in turn, reduces landfill waste and saves on future costs.



As well as the products sustainable credentials, the judges were also impressed with the use of virtual reality to enable the client to visualise their space and make changes. The use of software to calculate a number of sustainability parameters, including waste reduction, VOCs, recycled content to help inform the client decision was also applauded.

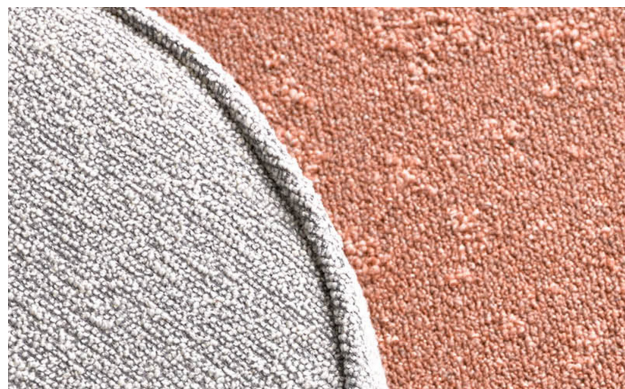


## Tarkett UK DESSO Origin

**The DESSO Origin carpet tile collection is made to be remade. A truly circular product, it has been designed to be disassembled so its components can be easily recycled into raw material for new carpet tiles. The result? A collection that combines technical expertise with tactility and textural beauty.**

Tarkett is currently the only carpet tile manufacturer with a closed-loop recycling system in Europe, limiting the use of virgin raw materials for new products and avoiding common, carbon-emitting options such as incineration and landfill at products end-of-life.

DESSO Origin's fully recyclable carpet tiles are manufactured using 100% green energy. The EcoBase 100% recyclable Cradle to Cradle Gold-certified™ carpet tile backing is made from polyolefin granulates and contains on average 80% recycled chalk from the local drinking water industry in the Netherlands where the tiles are manufactured.



The Polyamide 6 (PA6) ECONYL® yarn is a 100% regenerated nylon yarn developed from waste such as discarded fishing nets.

Once disassembled, old makes way for new. Used backing is shredded, then reformed into polyolefin granulates to create new EcoBase backing. The yarn is separated from their backing, PA6 ECONYL® yarn is recycled, regenerated and reintegrated within new carpet tiles.

Recycling EcoBase-backed carpet tiles with ECONYL® yarn delivers up to 84% CO<sub>2</sub> savings compared to incineration.

The judges commented that Tarkett has paid attention to its environmental footprint, not only by using recycled materials and green energy in its manufacturing but by also creating a fully recyclable product. They said that it is good to see a manufacturer considering its environmental impact throughout its lifecycle, from reduction of extraction of virgin materials to the end-of-life recycling.

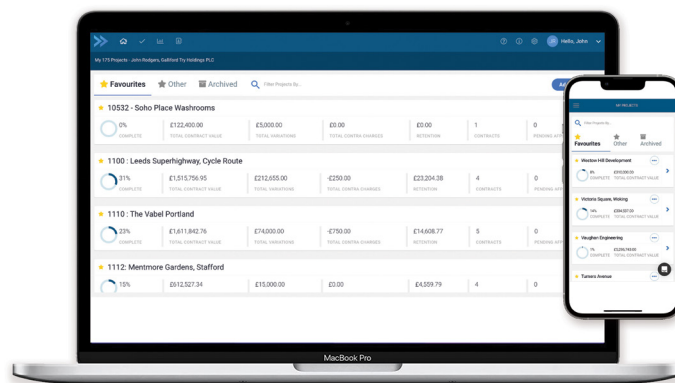
# The smartest trick of the building trade

The trusted standard in applications for payment

In the fast-paced fit-out environment, Payapps makes magic happen between main contractors and subcontractors by simplifying and speeding up the application for payment process by up to 50%.

Payapps is a cloud-based collaboration tool that not only facilitates timely submission and processing of applications for payment but provides an accurate and transparent view of variations, retention and payment status.

[CLICK HERE](#) for more information about how Payapps helps the fit-out and interiors sector



"I can't believe we tried to manage applications for payment using spreadsheets and paperwork – in terms of administrative efficiencies, we're saving around £100k a year now."

Kevin P'ng, Commercial Director, BW