

Photographic survey of Fire doors for Stoke-on-Trent City Council.

1) [REDACTED] Front Door



P1 Middle Hinge plate, door, showing no intumescent pad behind plate



P2 Middle Hinge plate, Frame, showing no intumescent pad behind plate



P3 Top hinge plate, Frame, showing no intumescent pad behind plate

Front Door continued



P4 Strike plate to latch, no intumescent pad



P5 Latch casing, no intumescent to front of latch or around casing



P6 Casing to wall, 12mm gap infilled with expanding foam on closing edge

Front Door continued



P7 Casing to soffit, 25mm gap filled with expanding foam



P8 Draft excluder to bottom of door holding door open when released

2) Front Door



P9 Bottom hinge plate frame, no intumescent pad



P10 Top hinge plate, door, no intumescent pad

[REDACTED], Front Door continued



P11 Bottom hinge plate, door, no intumescent pad



P12 Latch strike plate, no intumescent



P13 Latch, no intumescent to front or casing



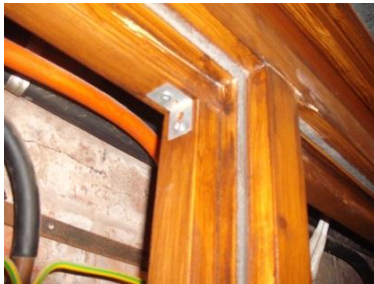
P14 Gap between frame and wall sealed with expanding foam



### 3) Honeywall House Ground Floor Service riser doors



P15 Double door configuration of service riser



P16 Centre post of door frame is held in place by brackets after being reinstalled from original, Top



P17 Centre post of door frame is held in place by brackets after being reinstalled from original, Bottom



P18 Hinge plate, Frame, intumescent pad behind plate



P19 Intumescent pad

Honeywall House Ground Floor Service riser doors continued



P20 Hinge plate, Door, no intumescent pad



P21 Hinge plate door, no intumescent pad



P22 Left hand door, closing edge, 10mm gap frame to wall sealed with expanding foam to top half of frame



P23 Left hand door, closing edge, 10mm gap frame to wall sealed with no seal to bottom half of frame

Honeywall House Ground Floor Service riser doors continued



casing

P24 Latch to left hand door, no intumescent pads to latch front or



P25 Latch strike plate, no intumescent pad to strike plate

4) Honeywall House 6<sup>th</sup> Floor Service riser doors



P26 Hinge plate, Frame, no intumescent pad



P27 Hinge plate, Door, no intumescent pad

Honeywall House 6th Floor Service riser doors continued



P28 Hinge plate, Door, no intumescent pad



P29 Latch removed from door leaf



P30 Mortised hole in right hand door leaf to accommodate latch



P31 Hole in centre post from left hand side, strike plate on right hand side is visible as hole goes right through centre post

Honeywall House 6th Floor Service riser doors continued



P32 Hole in centre post from right hand side, strike plate on left hand side is visible as hole goes right through centre post



P33 Latch removed from right hand door leaf, no intumescent to front or casing of latch



P34 10mm Gap between frame and wall to right hand side, no seal



P35 10mm Gap between frame and wall to right hand side, no seal

5) Honeywall House cross corridor fire door 4<sup>th</sup> Floor



P36 Packer found behind all hinge plates, assumed to be intumescent material



P37 Top hinge plate, Frame removed, intumescent pad in place



P38 Bottom hinge plate, Frame, removed, intumescent pad in place



P39 Original door closer.



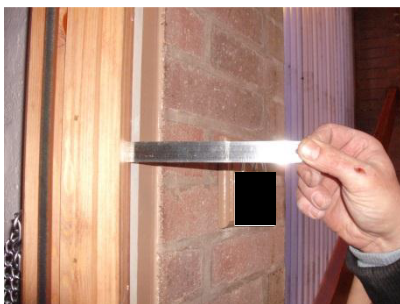
6) [REDACTED], Foyer Door



P40 Hinge plate, Frame, Middle, no intumescent pad



P41 Hinge plate, Door, Middle, no intumescent pad



P42 150mm steel rule at face of 100mm door frame

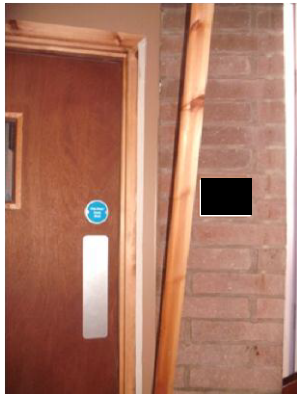


fill

P43 50 mm steel rule 100mm into gap between frame and wall, no



██████████, Foyer Door continued



P44 Gap between frame and wall, closing edge 2-10mm no fill



P45 Metal roller catch, no intumescent to casing



P46 Strike plate removed no intumescent pad

7) ██████████, Service cupboard door



P47 Hinge plate, Frame, top, no intumescent



P48 Hinge plate, Frame, middle, no intumescent pad



P49 Latch strike plate, no intumescent pad



P50 Latch, no intumescent pad to front or casing



P51 Frame wall gap, 20mm no seal

8) [REDACTED], Front door



P52 Hinge plate Door, Top, no intumescent pad



P53 Hinge plate Door, Middle, no intumescent pad



P54 Hinge Plate Frame, Middle, no intumescent pad



P55 Latch, no intumescent to casing of front plate

9) [REDACTED], Foyer Door



P56 Hinge plate, Frame, Middle, no intumescent pad



P57 Hinge plate, Frame, Top, no intumescent pad



P58 Hinge plate, Door, Top, no intumescent pad



P59 Strike plate removed no intumescent pad



P60 Metal roller catch removed, no intumescent to casing

██████████, Foyer Door Continued



P61 Frame to wall gap, external face, closing edge. 13mm gap no seal, plastic packer used.



P62 Frame to wall gap, external face, closing edge. 13mm gap no seal



P63 Frame to wall gap, internal face, hanging edge. Timber noggins used, note screw fixing has missed noggin. No seal/fill between noggins.



P64 Frame to wall gap, internal face, hanging edge. Timber noggins used, this faced covered with 15mm architrave. No seal or fill between noggins.

10) [REDACTED], Service Cupboard Door



P65 Hinge plate, Frame, Middle, no intumescent pad



P66 Hinge plate, Frame, Top, no intumescent pad



P67 Strike plate removed no intumescent pad



P68 Latch, no intumescent pad to front or casing

██████████, Service Cupboard Door Continued



installation

P69 Frame, closing edge, cut back to 80mm to allow for service



P70 20mm Gap between frame and wall, closing edge, no seal/fill



P71 20mm Gap between frame and wall, plastic packers used

11) ██████████ Flat Door



P72 Hinge plate, Frame, Middle, no intumescent pad



Flat Door Continued



P73 Hinge plate, Frame, Top, no intumescent pad



P74 Hinge plate, Door, Middle, no intumescent pad



P75



P76 Latch, no intumescent pad to front or casing



P77 Electric cables breaching frame, no seal

Flat Door Continued



P78 20mm gap between frame and soffit, electric cables in void, no fill/seal



P79 20mm gap between frame and soffit, electric cables in void, no fill/seal

12) , Foyer Door



P80 Hinge plate, Frame, Bottom, no intumescent pad



P81 Hinge plate, Frame, Middle, no intumescent pad



P82 Frame to wall gap, 65mm, not sealed, frame not connecting with packers/noggins

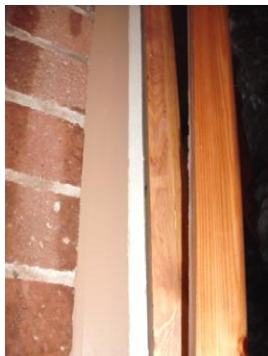
[REDACTED], Foyer Door Continued



P83 Frame to wall gap, 65mm, not sealed, frame not connecting with packers/noggins



P84 Frame to wall/soffit gap, not sealed, frame not connecting with packers/noggins, insufficiently secured.



P85 Frame to wall gap, hanging edge, not sealed



P86 Frame to wall gap, hanging edge, not sealed, frame not connecting with packers/noggins

██████████, Foyer Door Continued



P87 Frame to wall gap, hanging edge, not sealed, frame not connecting with packers/noggins



P88 Frame to wall/soffit gap, not sealed, frame not connecting with packers/noggins, insufficiently secured.

13) ██████████ Service Cupboard Door



P89 Hinge plate, Frame, Middle, no intumescent pad



P90 Hinge plate, Frame, Bottom, no intumescent pad

Service Cupboard Door Continued



P91 Latch plate removed, no intumescent pad



P92 Latch, no intumescent pad to front or casing

14) Flat Door



P93 Hinge plate, Frame, Bottom, no intumescent pad



P94 Hinge plate, Door, Top, no intumescent pad



P95 Hinge plate, Door, Bottom, no intumescent pad

Flat Door Continued



P96 Latch, no intumescent pad to front or casing



P97 Latch plate removed, no intumescent pad

15) Foyer Door



P98 Hinge plate, Frame, Bottom, no intumescent pad



P99 Hinge plate, Frame, Middle, no intumescent pad



P100 Hinge plate, Door, Middle, no intumescent pad

██████████ Foyer Door Continued



P101 Strike plate removed, no intumescent pad



P102 Latch plate removed, no intumescent pad to front plate or casing



P103 Frame to wall gap, hanging edge, not sealed/filled, frame connecting with packers/noggins



P104 Frame to wall gap, hanging edge, not sealed/filled, frame connecting with packers/noggins

16) ██████████ Service Cupboard Door



P105 Hinge plate, Frame, Top, no intumescent pad



Service Cupboard Door Continued



P106 Hinge plate, Frame, Middle, no intumescent pad



P107 Strike plate removed, no intumescent pad



P108 Latch plate removed, no intumescent pad to front plate or casing



P109 Frame to closing edge cut back to 60mm



P110 30mm gap between frame and wall, no packers/fill/seal. Frame is not securely fixed.

Service Cupboard Door Continued



P111 30mm gap between frame and wall, no packers/fill/seal. Frame is not securely fixed.



P112 Additional photograph to show incorrect fire seal inside service cupboard



P113 Additional photograph to show incorrect fire seal inside service cupboard

17) Flat Door



P114 Hinge plate, Frame, Bottom, no intumescent pad, plastic packer used



P115 Hinge plate, Frame, Middle, no intumescent pad

Flat Door Continued



P116 Hinge plate, Door, Middle, no intumescent pad



P117 Strike plate removed, no intumescent pad



P118 Latch plate removed, no intumescent pad to front plate or casing

18) Foyer Door



P119 Hinge plate, Frame, Bottom, no intumescent pad



P120 Hinge plate, Door, Middle, no intumescent pad

██████████ Foyer Door Continued



P121 Hinge plate, Frame, Middle, no intumescent pad



P122 Strike plate removed, no intumescent pad



P123 Latch removed, no intumescent pad to front plate or casing



missed noggin/wall

P124 Frame to wall gap, 70mm, hanging edge, no fill/seal. 2 x fixings



missed noggin/wall

P125 Frame to wall gap, 70mm, hanging edge, no fill/seal. 2 x fixings

██████████ Foyer Door Continued



noggin/wall

P126 Frame to wall gap, 70mm, hanging edge, no fill/seal. 2 x fixings missed



missed noggin/wall

P127 Frame to wall gap, 70mm, hanging edge, no fill/seal. 2 x fixings

19) ██████████ Service Cupboard Door



P128 Hinge plate, Frame, Bottom, no intumescent pad



P129 Hinge plate, Frame, Bottom, no intumescent pad



P130 Strike plate removed, no intumescent pad

Service Cupboard Door Continued



P131 Latch plate removed, no intumescent pad to front plate or casing



P132 Frame to wall gap, 10mm, closing edge, no fill/seal



P133 Frame to wall gap, 10mm, closing edge, no fill/seal, no noggins/packers



P134 Frame to wall gap, 10mm, closing edge, no fill/seal, no noggins/packers

20) Flat Door



P135 Hinge plate, Frame, Bottom, no intumescent pad

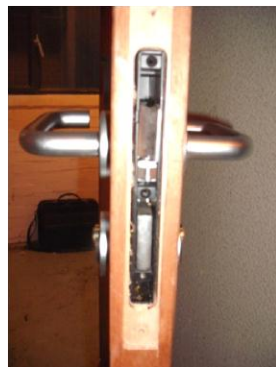
Flat Door Continued



P136 Hinge plate, Frame, Top, no intumescent pad



P137 Strike plate removed, no intumescent pad



P138 Latch plate removed, no intumescent pad to front plate or casing



P139 40mm gap between frame and soffit, no fill/seal



P140 40mm gap between frame and soffit, no fill/seal



21) [REDACTED] Foyer Door



P141 Hinge plate, Frame, Middle, no intumescent pad



P142 Hinge plate, Frame, Bottom, no intumescent pad



P143 Hinge plate, Door, Bottom, no intumescent pad



P144 Gap between frame/wall, hanging edge, no seal/fill



P145 Gap between frame/wall, hanging edge, no seal/fill

22) [REDACTED] Service Cupboard Door



P146 Strike plate removed, no intumescent pad



P147 Strike plate removed, no intumescent pad



P148 Latch and fore plate removed, no intumescent pad



P149 Latch and fore plate removed, no intumescent pad



P150 Gap between frame/wall, closing edge, no seal/fill

23) XXXXXXXXXX Flat Door



P151 Hinge plate, Frame, Bottom, no intumescent pad



P152 Hinge plate, Frame, Top, no intumescent pad, plastic packer



P153 Hinge plate, Door, Bottom, no intumescent pad



P154 Latch fore plate removed, no intumescent pad



P155 Strike plate removed, no intumescent pad

Flat Door Continued



P156 Additional Lock installed by resident, no intumescent pads to fore plate  
or casing



P157 Additional Lock installed by resident, strike plate removed, no  
intumescent pad



P158 27mm gap between frame and soffit, no fill/seal

24) Foyer Door



P159 Hinge plate, Frame, Middle, no intumescent pad



P160 Hinge plate, Door, Middle, no intumescent pad

██████████ Foyer Door Continued



P161 Hinge plate, Frame, Bottom, no intumescent pad



P162 Strike plate removed, no intumescent pad

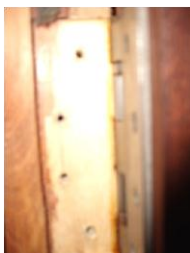


P163 Latch and fore plate removed, no intumescent pad



P164 5mm gap between frame and wall, hanging edge, frame not in contact with noggins, no seal/fill

25) ██████████ Service Cupboard Door



P165 Hinge plate, Door, Bottom, no intumescent pad

Service Cupboard Door Continued



P166 Hinge plate, Frame, Middle, no intumescent pad



P167 Hinge plate, Frame, Bottom, no intumescent pad



P168 Strike plate removed, no intumescent pad



P169 Latch fore plate removed, no intumescent pad



P170 Frame, closing edge, cut back to 70mm

Service Cupboard Door Continued



noggins/packers

P171 20mm gap between frame, closing edge and wall, no seal/fill, no



noggins/packers

P172 20mm gap between frame, closing edge and wall, no seal/fill, no



P173 75mm x 15mm hole for cable penetrations, no seal to conduit

26) Flat Door



P174 Hinge plate, Frame, Middle, no intumescent pad



P175 Hinge plate, Frame, Bottom, no intumescent pad



Flat Door Continued



P176 Strike plate removed, no intumescent pad



P177 Latch fore plate removed, no intumescent pad to casing or plate



P178 8mm gap between frame/wall, closing edge. No fill/seal



P179 8mm gap between frame/wall, closing edge. No fill/seal



P180 Architrave top of frame has no mechanical fixing

Flat Door Continued



P181 Architrave top of frame has no mechanical fixing, 8mm gap between top of frame and soffit, no fill/seal

27) Foyer Door



P182 Hinge plate, Frame, Middle, no intumescent pad



P183 Hinge plate, Frame, Bottom, no intumescent pad



P184 Hinge plate, Door, Middle, no intumescent pad



P185 Strike plate removed, no intumescent pad

██████████ Foyer Door Continued



P186 Latch and fore plate removed, no intumescent pad to casing or plate



P187 10mm gap frame/wall, closing edge, frame not connected to noggin/packers. No infill/seal



P188 10mm gap frame/wall, closing edge, frame not connected to noggin/packers. No infill/seal

28) ██████████ Service Cupboard Door



P189 Hinge plate, Frame, Bottom, no intumescent pad



P190 Hinge plate, Frame, Middle, no intumescent pad

Service Cupboard Door Continued



P191 Strike plate removed, no intumescent pad



P192 Latch fore plate removed, no intumescent pad

29) Flat Door



P193 Hinge plate, Frame, Middle, no intumescent pad



P194 Hinge plate, Frame, Top, no intumescent pad



P195 Hinge plate, Door, Middle, no intumescent pad

Flat Door Continued



P196 Strike plate removed, no intumescent pad



P197 Latch fore plate removed, no intumescent pad to casing or plate



P198 32mm gap frame/soffit. No seal/fill



P198 32mm gap frame/soffit. No seal/fill

30) Foyer Door



P199 Hinge plate, Fame, Middle, no intumescent pad

Foyer Door Continued



P200 Hinge plate, Fame, Top, no intumescent pad



P201 Hinge plate, Door, Top, no intumescent pad



P202 Strike plate removed, no intumescent pad



P203 Latch and fore plate removed, no intumescent pad to casing or plate



P204 10mm gap frame/wall, hanging side. No fill/seal

31) [REDACTED] Service Cupboard Door



P205 Hinge plate, Fame, Middle, no intumescent pad



P206 Hinge plate, Fame, Bottom, no intumescent pad



P207 Strike plate removed, no intumescent pad



P208 Latch fore plate removed, no intumescent pad to casing or plate



No fill/seal

P209 35mm gap soffit/frame, 10mm gap wall/frame, closing edge.



32) Flat Door



P210 Hinge plate, Frame, Bottom, no intumescent pad



P211 Hinge plate, Frame, Middle, no intumescent pad



P212 Hinge plate, Door, Middle, no intumescent pad



P213 Cardboard packers used behind hinge plates



P214 Strike plate removed, no intumescent pad



P215 Latch fore plate removed, no intumescent pad to casing or plate

Flat Door Continued



P216 28mm gap Frame/soffit. No fill/seal

33) Foyer Door



P217 Hinge plate, Fame, Bottom, no intumescent pad



P218 Hinge plate, Fame, Middle, no intumescent pad



P219 Hinge plate, Door, Top, no intumescent pad



P220 Latch and fore plate removed, no intumescent pad to casing or plate

██████████ Foyer Door Continued

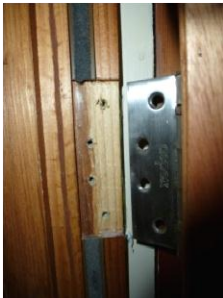


P221 Strike plate removed, no intumescent pad



P222 10mm gap frame/wall, hanging edge. No seal/infill

34) ██████████ Service Cupboard Door



P223 Hinge plate, Fame, Middle, no intumescent pad



P224 Hinge plate, Fame, Bottom, no intumescent pad



P225 Strike plate removed, no intumescent pad

Service Cupboard Door Continued



P226 Latch fore plate removed, no intumescent pad



P227 Frame cut back for services from 135mm to 80mm



P228 Additional piece glued onto architrave at top of frame to cover gap between frame and soffit. Not mechanically fixed.



P229 45mm gap frame/soffit. No fill

35) Flat Door



P230 Hinge plate, Fame, Middle, no intumescent pad

Flat Door Continued



P231 Hinge plate, Frame, Bottom, no intumescent pad



P232 Hinge plate, Door, Middle, no intumescent pad



P233 Strike plate removed, no intumescent pad



P234 Latch fore plate removed, no intumescent pad to plate or casing



P235 Top piece of beading is held on with glue only, Architrave removed to expose 45mm gap between frame and soffit, no fill/seal.

36) [REDACTED] Foyer Door



P236 Hinge plate, Fame, Middle, no intumescent pad, plastic packers



P237 Hinge plate, Fame, Bottom, no intumescent pad, plastic packers



P238 Hinge plate, Door, Middle, no intumescent pad

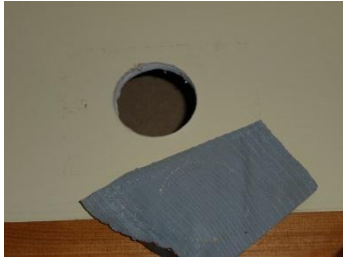


P239 Strike plate removed, no intumescent pad



P240 Latch and fore plate removed, no intumescent pad to plate or casing

██████████ Foyer Door Continued



P241 Additional photograph of 55mm diameter breach cut into compartment wall and covered with tape.



P242 Frame is tight against sub-frame across top of door



P243 Additional photograph of plastic conduit breaching compartment wall

37) ██████████ Service Cupboard Door



P244 Hinge plate, Fame, Bottom, no intumescent pad



P245 Hinge plate, Fame, Middle, no intumescent pad



Service Cupboard Door Continued



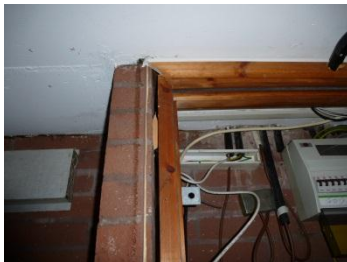
P246 Latch fore plate removed, no intumescent pad



P247 Strike plate removed, no intumescent pad



P248 Gap to wall/frame, Closing edge, no infill/seal.



P249 Gap to wall/frame, Closing edge, no infill/seal.



P250 40mm plastic conduit breaching top of frame, no seal.

38) Flat Door



P251 Hinge plate, Frame, Bottom, no intumescent pad



P252 Hinge plate, Door, Middle, no intumescent pad



P253 Hinge plate, Frame, Middle, no intumescent pad

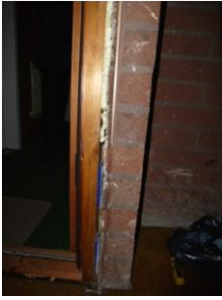


P254 Strike plate removed, no intumescent pad



P255 Latch fore plate removed, no intumescent pad to plate or casing

Flat Door Continued



Plastic packers used.

P256 15mm gap wall/frame, closing edge, partial fill using expanded foam.



P257 15mm gap wall/frame, closing edge, partial fill using expanded foam.

39) Foyer Door



P258 Hinge plate, Fame, Middle, no intumescent pad



P259 Hinge plate, Fame, Bottom, no intumescent pad



P260 Hinge plate, Door, Bottom, no intumescent pad

██████████ Foyer Door Continued



P261 Strike plate removed, no intumescent pad



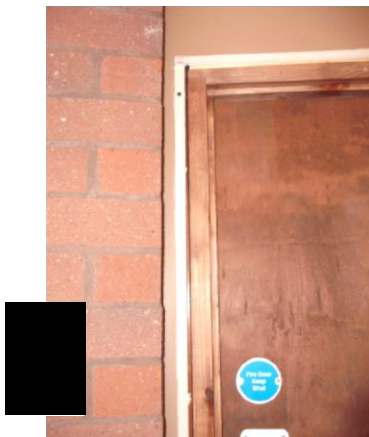
P262 Latch and fore plate removed, no intumescent pad to plate or casing



P263 Latch and fore plate removed, no intumescent pad to plate or casing



P264 11mm gap frame/soffit, no fill/seal



P265 11mm gap frame/wall, closing edge, no fill/seal

██████████ Foyer Door Continued



P266 11mm gap frame/wall, Hanging edge, no fill/seal

40) ██████████ Service Cupboard Door



P267 Hinge plate, Fame, Middle, no intumescent pad



P268 Hinge plate, Fame, Bottom, no intumescent pad



P269 Strike plate removed, no intumescent pad



P270 Latch fore plate removed, no intumescent pad

Service Cupboard Door Continued



P271 Frame/wall 12mm gap, closing edge, no seal/fill, no packers to frame



P272 Architrave to top of frame not mechanically fixed



P273 Additional photograph to show incorrect fire seal in service cupboard

41) Flat Door



P274 Hinge plate, Fame, Middle, no intumescent pad



P275 Hinge plate, Fame, Bottom, no intumescent pad

Flat Door Continued



P276 Hinge plate, Door, Middle, no intumescent pad



P277 Strike plate removed, no intumescent pad



P278 Latch fore plate removed, no intumescent pad to plate or casing

42) Foyer Door



P279 Hinge plate, Foyer, Bottom, no intumescent pad



P280 Hinge plate, Foyer, Middle, no intumescent pad



██████████ Foyer Door Continued



P281 Hinge plate, Door, Middle, no intumescent pad



P282 Strike plate removed, no intumescent pad



P283 Latch and fore plate removed, no intumescent pad to plate or casing



P284 Leaking door closer

43) ██████████ Service Cupboard Door



P285 Hinge plate, Fame, Middle, no intumescent pad

Service Cupboard Door Continued



P286 Hinge plate, Fame, Bottom, no intumescent pad



P287 Strike plate removed, no intumescent pad



P288 Latch fore plate removed, no intumescent pad



P289 12mm gap frame/wall closing edge, no fill/seal



P290 12mm gap frame/wall closing edge, no fill/seal

44) [REDACTED] Flat Door



P291 Hinge plate, Fame, Top, no intumescent pad



P292 Hinge plate, Fame, Bottom, no intumescent pad



P293 Hinge plate, Door, Middle, no intumescent pad



P294 Latch fore plate removed, no intumescent pad to plate and casing



P295 20mm gap between frame/soffit, no fill/seal



P296 20mm gap between frame/soffit, no fill/seal

45) [REDACTED] Foyer Door



P297 Hinge plate, Frame, Bottom, no intumescent pad



P298 Hinge plate, Door, Middle, no intumescent pad



P299 Hinge plate, Frame, Middle, no intumescent pad



P300 5mm Gap frame/wall, closing edge, no fill/seal. Frame not in contact with noggins/packers

46) [REDACTED] Service Cupboard Door



P301 Hinge plate, Frame, Middle, no intumescent pad

Service Cupboard Door Continued



P302 Strike plate removed, no intumescent pad



P303 Latch fore plate removed, no intumescent pad



P304 Frame cut down to allow service installation, Closing edge



P305 Frame cut down to allow service installation, Hanging Edge, frame is loose



P306 Frame cut down to allow service installation, Hanging Edge

47) Flat Door



25mm length

P307 Hinge plate, Frame, Bottom, no intumescent pad, screws cut down to



25mm length

P308 Hinge plate, Frame, Middle, no intumescent pad, screws cut down to



P309 Paper packer used on hinge, no intumescent pad



P310 Strike plate removed, no intumescent pad

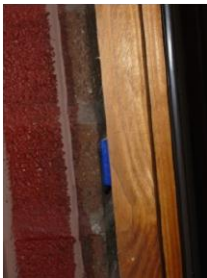


P311 Latch fore plate removed, no intumescent pad to plate or casing

Flat Door Continued



P312 Intumescent seal to door frame loose



P313 10mm gap Frame/Wall, no seal/fill, plastic packers used



P314 10mm gap Frame/Wall, no seal/fill, plastic packers used

48) Foyer Door



P315 Hinge plate, Frame, Bottom, no intumescent pad



P316 Hinge plate, Frame, Middle, no intumescent pad



Foyer Door Continued



P317 Hinge plate, Door, Middle, no intumescent pad



P318 Strike plate removed, no intumescent pad



P319 Latch and fore plate removed, no intumescent pad to plate or casing



P320 Latch and fore plate removed, no intumescent pad to plate or casing



packers/noggins used

P321 12mm gap frame/wall, hanging edge, no seal/fill, plastic

██████████ Foyer Door Continued



P322 12mm gap frame/wall, hanging edge, no seal/fill, plastic packers/noggins used

49) ██████████ Service Cupboard Door



P323 Hinge plate, Frame, Middle, no intumescent pad



P324 Hinge plate, Frame, Bottom, no intumescent pad



P325 Strike plate removed, no intumescent pad



P326 Latch fore plate removed, no intumescent pad

Service Cupboard Door Continued



P327 Frame cut down to allow service installation, Closing Edge



P328 Frame cut down to allow service installation, Closing Edge



P329 Frame cut down to allow service installation, Closing Edge



P330 10mm gap frame/wall, hanging edge, no seal/fill

50) Flat Door



P331 Hinge plate, Frame, Bottom, no intumescent pad, paper packer

Flat Door Continued



P332 Hinge plate, Frame, Middle, no intumescent pad



P333 Hinge plate, Door, Middle, no intumescent pad



P334 Strike plate removed, no intumescent pad



P335 Latch fore plate removed, no intumescent pad to plate or casing



P336 5mm gap frame/wall, closing edge. No fill/seal

Flat Door Continued



plastic packers used

P337 5mm gap frame/wall, closing edge. Partial fill using expanding foam,



P338 15mm gap frame/soffit, no seal/fill

51) Foyer Door



P339 Hinge plate, Frame, Middle, no intumescent pad



P340 Hinge plate, Frame, Bottom, no intumescent pad



P341 Strike plate removed, no intumescent pad

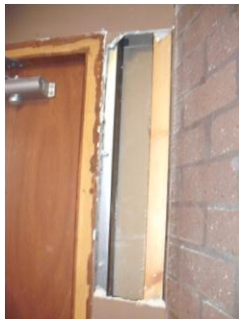
██████████ Foyer Door Continued



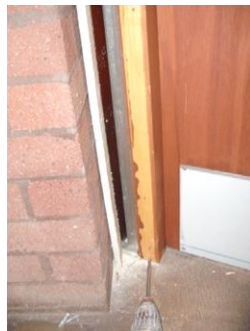
P342 Latch and fore plate removed, no intumescent pad to plate or casing



P343 Gap frame/wall sealed with mastic



P344 Frame, hanging edge, supported with steel channel



P345 Frame, closing edge, supported with steel channel

52) ██████████ Service Cupboard Door



P346 Hinge plate, Frame, Middle, no intumescent pad

Service Cupboard Door Continued



P347 Latch fore plate removed, no intumescent pad



P348 Strike plate removed, no intumescent pad



P349 38mm gap soffit/frame, no fill/seal



P350 Wires breach architrave at soffit, inadequate seal

53) Foyer Door



P351 Hinge plate, Frame, Top, no intumescent pad



█ Foyer Door



P352 Hinge plate, Frame, Middle, no intumescent pad



P353 Strike plate removed, no intumescent pad



P354 Latch and fore plate removed, no intumescent pad to plate or casing



P355 Frame/wall gap sealed with mastic



P356 Additional photograph, tenant has installed own bolt

54) █ Service Cupboard Door



P357 Hinge plate, Frame, Middle, no intumescent pad

Service Cupboard Door Continued



P358 Latch and fore plate removed, no intumescent pad to plate or casing



P359 Strike plate removed, no intumescent pad



P360 Latch and fore plate removed, no intumescent pad to plate or casing



P361 12mm gap wall/frame, no fill/seal

55) Foyer Door



P362 Hinge plate, Frame, Top, intumescent pad in place

Foyer Door Continued



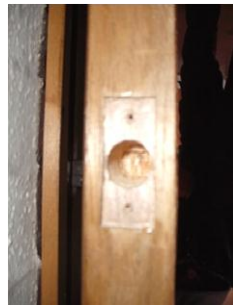
P363 Hinge plate, Frame, Middle, intumescent pad in place



P364 Hinge plate, Door, Top, intumescent pad in place



P365 Strike plate removed, no intumescent pad



P366 Latch and fore plate removed, no intumescent pad to plate or casing



P367 Gap between frame and support, plastic packers used

██████████ Foyer Door Continued



P368 Gap between frame and support, plastic packers used



P369 Plasterboard taken up tight to frame

56) ██████████ Service Cupboard Door



P370 Hinge plate, Frame, Middle, intumescent pad in place

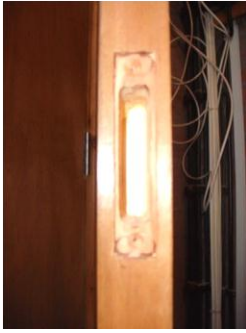


P371 Hinge plate, Frame, Bottom, intumescent pad in place



P372 Strike plate removed, no intumescent pad

Service Cupboard Door Continued



casing

P373 Latch and fore plate removed, no intumescent pad to plate or

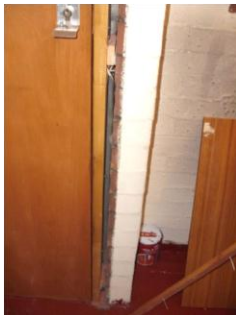


casing

P374 Latch and fore plate removed, no intumescent pad to plate or



P375 10mm gap frame/wall, closing edge, no seal/fill. No packers used



used

P376 10mm gap frame/wall, closing edge, no seal/fill. Single packer

57) Flat Door



P377 Hinge plate, Frame, Middle, intumescent pad in place

Flat Door Continued



P378 Hinge plate, Door, Top, intumescent pad in place



P379 Hinge plate, Frame, Top, intumescent pad in place



P380 Strike plate removed, no intumescent pad



P381 Latch fore plate removed, no intumescent pad to plate or casing

58) Foyer Door



P382 Hinge plate, Frame, Bottom, intumescent pad in place

Foyer Door Continued



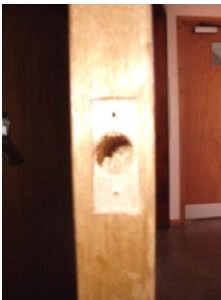
P383 Hinge plate, Frame, Middle, intumescent pad in place



P384 Hinge plate, Door, Middle, intumescent pad in place



P385 Strike plate removed, no intumescent pad



casing

P386 Latch and fore plate removed, no intumescent pad to plate or



P387 Plasterboard taken up tight to frame



59) [REDACTED] Service Cupboard Door



P388 Hinge plate, Frame, Top, intumescent pad in place



P389 Hinge plate, Frame, Bottom, intumescent pad in place



P390 Strike plate removed, no intumescent pad



P391 Latch fore plate removed, no intumescent pad



P392 5mm gap soffit/frame, no infill/seal

60) [REDACTED] Flat Door



P393 Hinge plate, Frame, Bottom, intumescent pad in place



P394 Hinge plate, Frame, Middle, intumescent pad in place



P395 Strike plate removed, no intumescent pad



P396 Latch fore plate removed, no intumescent pad to plate or casing



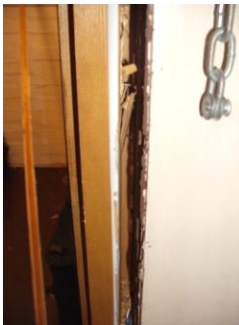
P397 2mm gap wall/frame, internal closing edge, no fill/seal

Flat Door Continued



packers used

P3987mm gap Frame/Wall, internal closing edge, no fill/seal, plastic



P399 7mm gap Frame/Wall, internal closing edge, no fill/seal



P400 2mm gap frame/soffit, no fill/seal

61) Foyer Door



P401 Hinge plate, Frame, Middle, intumescent pad in place



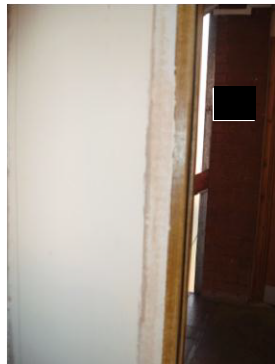
P402 Strike plate removed, no intumescent pad

██████████ Foyer Door Continued

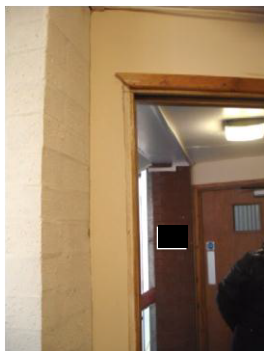


casing

P403 Latch and fore plate removed, no intumescent pad to plate or



P404 Plasterboard taken up tight to frame



P405 Plasterboard taken up tight to frame

62) ██████████ Service Cupboard Door



P406 Hinge plate, Frame, Middle, intumescent pad in place

Service Cupboard Door Continued



P407 Hinge plate, Frame, Top, intumescent pad in place



P408 Strike plate removed, no intumescent pad



P409 Latch fore plate removed, no intumescent pad



P410 2mm gap frame/wall, closing edge, no fill/seal

63) Flat Door



P411 Hinge plate, Frame, Middle, intumescent pad in place



P412 Hinge plate, Frame, Bottom, intumescent pad in place



P413 Strike plate removed, no intumescent pad



P414 Mastic to top of frame/soffit ap removed, no backing strip or fill



P415 Mastic to gap wall/frame, closing edge, shrinking back

Flat Door Continued



P416 Mastic to gap wall/frame, closing edge, shrinking back



P417 Mastic to gap soffit/frame, shrinking back

64) Foyer Door



P418 Hinge plate, Frame, Middle, intumescent pad in place



P419 Hinge plate, Frame, Bottom, intumescent pad in place



P420 Hinge plate, Door, Bottom, intumescent pad in place



██████████ Foyer Door Continued

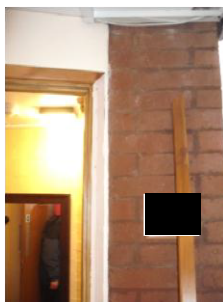


casing

P421 Latch and fore plate removed, no intumescent pad to plate or



P422 Strike plate removed, no intumescent pad



P423 5mm gap Frame/wall, Closing edge, no seal/fill



P424 5mm gap Frame/wall, Closing edge, no seal/fill

65) ██████████ Service Cupboard Door



P425 Hinge plate, Frame, Middle, intumescent pad in place

Service Cupboard Door Continued



P 426 Hinge plate, Frame, Bottom, intumescent pad in place



P427 Strike plate removed, no intumescent pad



P428 Latch fore plate removed, no intumescent pad



P429 8mm gap soffit/frame, no seal/fill



P430 5mm gap frame/wall, closing edge, no seal/fill

66) Flat Door



P431 Hinge plate, Frame, Middle, intumescent pad in place



P432 Hinge plate, Frame, Bottom, intumescent pad in place



P433 Hinge plate, Door, Middle, intumescent pad in place



P434 Strike plate removed, no intumescent pad



P435 10mm gap wall/frame, closing edge, no fill/seal

Flat Door Continued



packers used

P43610mm gap wall/frame, closing edge, no fill/seal, plastic