



ARUP
ASSOCIATES

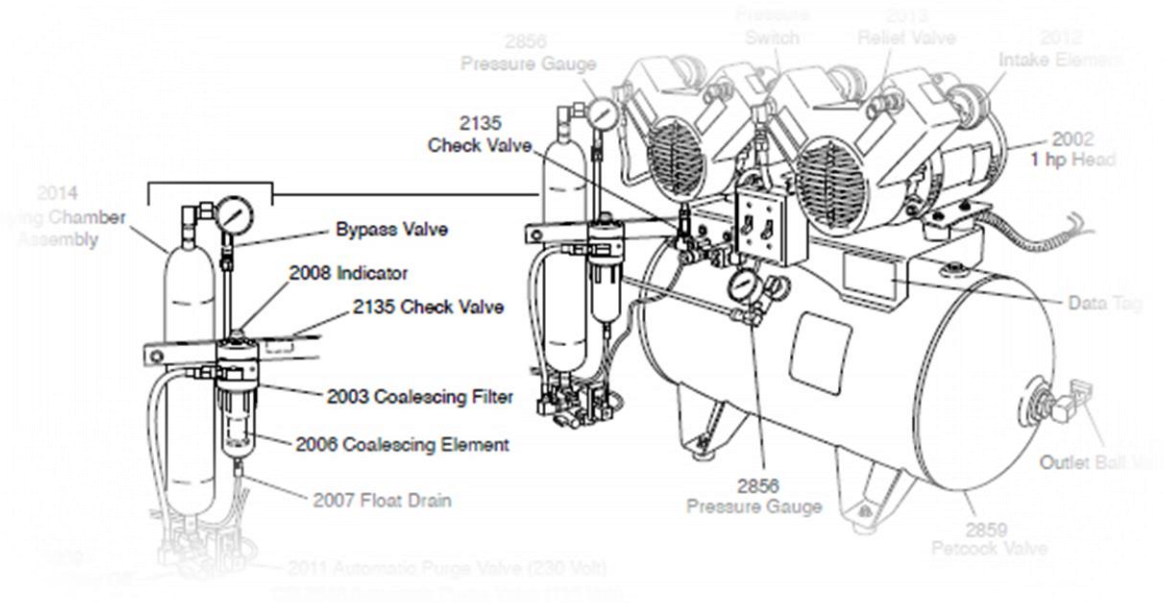
A large, light green triangle with a fine dotted pattern, pointing upwards and to the right, occupies the left side of the page.

PRODUCT DATA TEMPLATES

A SIMPLE HOW-TO

IDENTIFY NEED

New TYPE of equipment, not new product of existing type.



IDENTIFY NEED

Is there one of these on the Master List of PDTs?

Template	Owner	Author	Progress	Author Company	Author Name	Author Email
Actuator	CIBSE	RIM	None	SPC	Richard Meskimmer	Richard.Meskimmer@spc.co.uk
Air Curtain	CIBSE	CC	Technical Approval	Arup	Carl Collins	Carl.collins@arup.com
Air Diffuser	CIBSE	RV	Technical Approval	Hoare Lea	Richard Vincent	richardvincent@hoarelealea.com
Air Handler	CIBSE	TK	None	ICOM	Tahsina Khan	tahsina.khan@icom.org.uk
Air Louvre	CIBSE	CC	Technical Approval	Arup	Carl Collins	Carl.collins@arup.com
Attenuator	CIBSE	CC	Technical Approval	Arup	Carl Collins	Carl.collins@arup.com
Battery	CIBSE	CC	Technical Approval	Arup	Carl Collins	Carl.collins@arup.com
Beacon	CIBSE		None			
Bell Sounder	CIBSE		None			
Boiler	CIBSE	TK	None	ICOM	Tahsina Khan	tahsina.khan@icom.org.uk
Break Glass	CIBSE	CC	Technical Approval	Arup	Carl Collins	Carl.collins@arup.com
Buffer Vessel	CIBSE	NT	Technical Approval	Balfour Beatty	Neil Thompson	Neil.Thompson@balfourbeatty.com
Burners	CIBSE	TK	None	ICOM	Tahsina Khan	tahsina.khan@icom.org.uk
Calorifier	CIBSE		None			
CAV Box	CIBSE	IG	None	Trox	Iskender Gencer	igencer@troxuk.co.uk
CHP	CIBSE	TK	None	ICOM	Tahsina Khan	tahsina.khan@icom.org.uk
Chilled Beam	CIBSE	IG	None	Trox	Iskender Gencer	igencer@troxuk.co.uk
Chiller	CIBSE	AS	None			
Circuit Breaker	CIBSE		None			
Cistern	CIBSE		None			
Condenser	CIBSE		None			
Contact	CIBSE		None			
Cooling Coil	CIBSE	RIM	Technical Approval	SPC	Richard Meskimmer	Richard.Meskimmer@spc.co.uk
Cooling Tower	CIBSE		None			
Damper (Fire, smoke, VCD)	CIBSE	DF	Technical Approval	Ruskin Air	David Fitzpatrick	dfitzpatrick@ruskinuk.co.uk
Dehumidifier	CIBSE		None			
Detector	CIBSE		None			
Door Contact	CIBSE		None			
Drain	CIBSE		None			
DX Indoor Unit	CIBSE	WC	None	Hitachi	Warren Clark	Warren.clark@hitachi.eu.com
DX Outdoor Unit	CIBSE	WC	None	Hitachi	Warren Clark	Warren.clark@hitachi.eu.com
Earthing Pit	CIBSE	MB	None	Atkins	Mathew Beard	Mathew.beard@atkinsglobal.com
Emergency Stop	CIBSE		None			
Evaporator	CIBSE		None			
Expansion Tank	CIBSE		None			
Fan Box	CIBSE	CC	Technical Approval	Arup	Carl Collins	Carl.collins@arup.com
Fan Coil Unit	CIBSE	MP	Technical Approval	Trox	Michelle Perry	MPerry@troxuk.co.uk
Fan Convactor	CIBSE	RIM	None	SPC	Richard Meskimmer	Richard.Meskimmer@spc.co.uk
Filter	CIBSE		None			
Finned Tube	CIBSE		None			
Fire Alarm Panel	CIBSE		None			
Floodlight	CIBSE		None			
Floor Box	CIBSE		None			
Gas Booster	CIBSE	TK	None	ICOM	Tahsina Khan	tahsina.khan@icom.org.uk
Generator	CIBSE		None			



IDENTIFY DATA FIELDS

Is there one of these, or something similar in SPie
(Specifier's Products Information Exchange)

COBie 2012 UK
Template Repository

[Home](#) [About The Templates](#) **[Templates A-Z](#)** [Search Templates](#) [BIM Task Group](#) [Contact](#)

Templates A-Z

The templates are presented as complete sets in a compressed zip directory format. Each zip directory contains:
COBie, IFC, IFCXML, HTML, and XHTML file types.

Download the complete set of templates here - [DOWNLOAD](#) (8mb zip file expanding to 115mb)

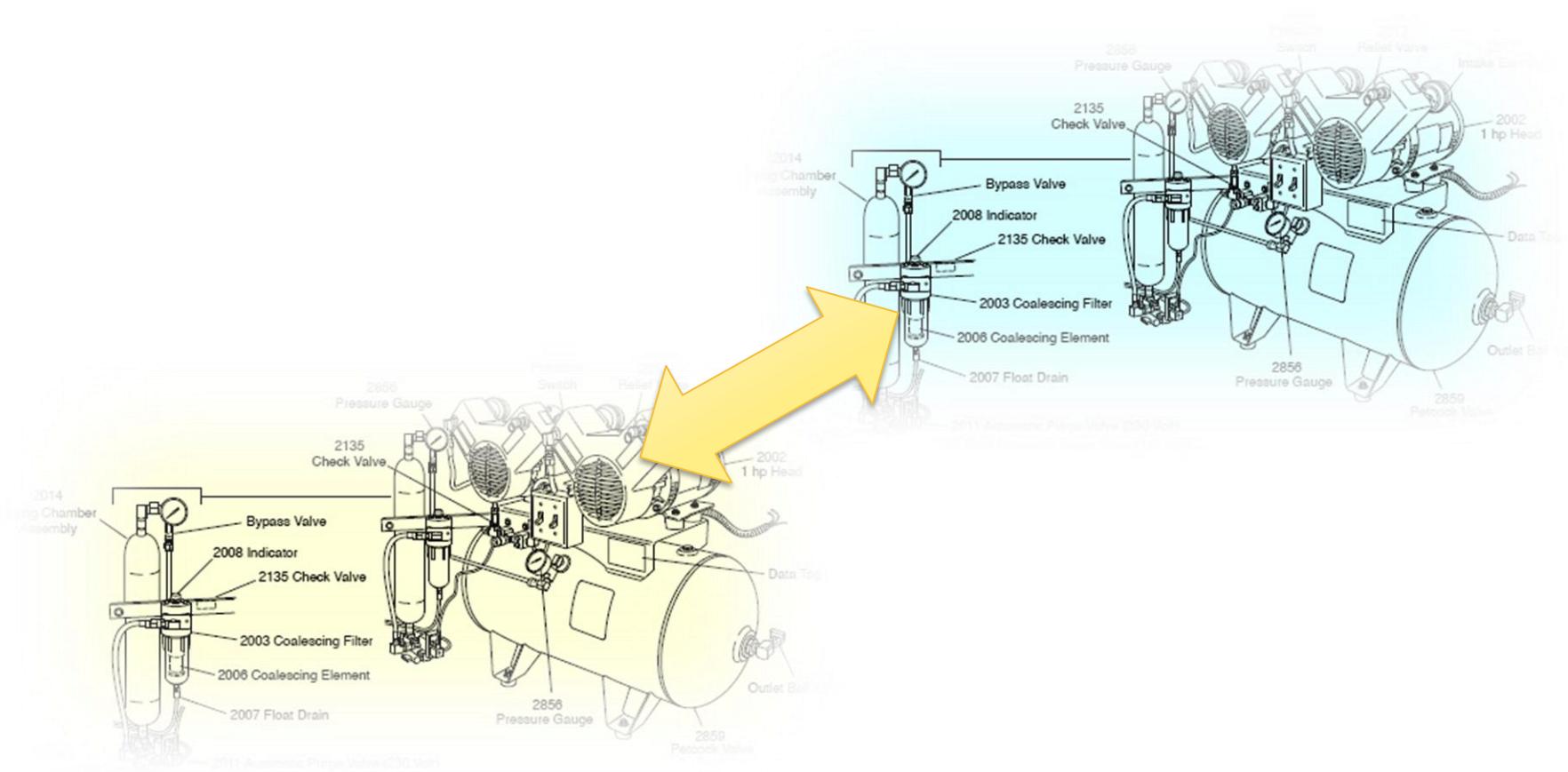
A B C D E F G H I J K L M N O P Q R S T U V W X Y Z

A

- [Actuator ELECTRIC ACTUATOR UK](#)
- [Actuator HAND OPERATED ACTUATOR UK](#)
- [Actuator HYDRAULIC ACTUATOR UK](#)
- [Actuator NOT DEFINED UK](#)
- [Actuator PNEUMATIC ACTUATOR UK](#)
- [Actuator THERMOSTATIC ACTUATOR UK](#)
- [Actuator USER DEFINED UK](#)
- [Air Terminal DIFFUSER UK](#)
- [Air Terminal GRILLE UK](#)
- [Air Terminal LOUVRE UK](#)
- [Air Terminal NOT DEFINED UK](#)
- [Air Terminal REGISTER UK](#)
- [Air Terminal USER DEFINED UK](#)
- [Air Terminal Box CONSTANT FLOW UK](#)
- [Air Terminal Box NOT DEFINED UK](#)
- [Air Terminal Box USER DEFINED UK](#)
- [Air Terminal Box VARIABLE FLOW PRESSURE DEPENDANT UK](#)



Is there anything similar already covered?



PDT Template

Gives a good start and some guidance

	A	B	C	D	E	F
1	Template Category	Category				
2	Template Version	v.				
3	Category Description	Description				
4	Classification System					
5	Classification	Value				
6	Information Category	Parameter Name	Value	Units	Notes	
7	Manufacturer Data					
8	Specifications	Manufacturer		Text		
9	Specifications	Manufacturer Website		URL		
10	Specifications	Product Range		Text		
11	Specifications	Product Model Number (Code)		Text		
12	Specifications	CE Approval No		Text		
13	Specifications	Product Literature Webpage		URL		
14	Construction Data					
15	Specifications	Type		Text	This is a COBIE field, other fields will be required in final PDTs.	
16	Specifications	Shape		Text	This is a COBIE field, other fields will be required in final PDTs.	
17	Specifications	Material		Text	This is a COBIE field, other fields will be required in final PDTs.	
18	Dimensional Data					
19	Specifications	Overall Length		mm		
20	Specifications	Overall Width		mm		
21	Specifications	Overall Height		mm		
22	Specifications	Gross Weight		kg	Equals to Operating Weight	
23	Specifications	Shipping Weight		kg		
24	Specifications	Access Clearance Top		mm		
25	Specifications	Access Clearance Bottom		mm		
26	Specifications	Access Clearance Left		mm		
27	Specifications	Access Clearance Right		mm		
28	Specifications	Access Clearance Front		mm		
29	Specifications	Access Clearance Rear		mm		
30	Performance Data					
31	Specifications	Reference Standard		Text		
32	Electrical Data (if required)					
33	Specifications	Incoming Supply Electrical Voltage		Volts		
34	Specifications	Incoming Supply Phase		Number	13	
35	Specifications	Incoming Supply Electrical Frequency		Hertz	50,60	
36	Specifications	Motor Enclosure Rating		Text	IP numbers	
37	Specifications	Motor Type		Text		
38	Specifications	Number of Poles		Number	13	
39	Specifications	Motor Efficiency Class (CEMEP)		Text		
40	Specifications	Starting Method		Text	DOL,Star/Delta, Soft	
41	Controls					
42	Specifications	BMS Links		Y/N		
43	Sustainability					
44	Sustainable Material	Embodied Carbon		kgCO2		
45	Sustainable Material	Life Cycle Analysis		Number	BREEAM	
46	Sustainable Material	Location of Manufacturer		GridRef	North/Easting	
47	Sustainable Material	Green Guide for Specification		Text	A - E	
48	Sustainable Material	Environmental Product Declaration		Text	2nd Party Verification	
49	Sustainable Material	Responsible Sourcing of Materials		Text	Endorsing body	
50	Sustainable Material ETL	URL to Energy Technology List		URL	Hyperlink to ETL webpage for product	
51	Sustainable Material LEED	Responsible Extraction of Materials		Text	TBA	
52	Sustainable Material LEED	Material Ingredient Reporting		Text	TBA	
53	Operations & Maintenance					
54	Facilities/Asset Management	URL to O&M Manual		Text	Hyperlink to Manufacturer O&M Data	
55	Facilities/Asset Management	Daily		Text	Maintenance tasks or SFG2012 codes.	
56	Facilities/Asset Management	Weekly		Text	Maintenance tasks or SFG2012 codes.	
57	Facilities/Asset Management	Monthly		Text	Maintenance tasks or SFG2012 codes.	
58	Facilities/Asset Management	Quarterly		Text	Maintenance tasks or SFG2012 codes.	
59	Facilities/Asset Management	5 Monthly		Text	Maintenance tasks or SFG2012 codes.	
60	Facilities/Asset Management	Annually		Text	Maintenance tasks or SFG2012 codes.	
61	Facilities/Asset Management	Bespoke Timeframe		Text	Maintenance tasks or SFG2012 codes.	
62	Facilities/Asset Management	Maintenance Required: 0-300hrs		Text	Maintenance tasks required during this time frame.	
63	Facilities/Asset Management	Maintenance Required: 301-600hrs		Text	Maintenance tasks required during this time frame.	
64	Facilities/Asset Management	Maintenance Required: 601-1000hrs		Text	Maintenance tasks required during this time frame.	



PDT Titles

Add the Category Name and Description (just a single sentence).

	A	B	C	D	E	F
1	Template Category	Category				
2	Template Version	v.				
3	Category Description	Description				
4	Classification System					
5	Classification	Value				
6	Information Category	Parameter Name	Value	Units	Notes	
7	Manufacturer Data					
8	Specifications	Manufacturer		Text		
9	Specifications	Manufacturer Website		URL		
10	Specifications	Product Range		Text		
11	Specifications	Product Model Number (Code)		Text		
12	Specifications	CE Approval No		Text		
13	Specifications	Product Literature Webpage		URL		
14	Construction Data					
15	Specifications	Type		Text	This is a COBIE field, other fields will be required in final PDTs.	
16	Specifications	Shape		Text	This is a COBIE field, other fields will be required in final PDTs.	
17	Specifications	Material		Text	This is a COBIE field, other fields will be required in final PDTs.	
18	Dimensional Data					
19	Specifications	Overall Length		mm		
20	Specifications	Overall Width		mm		
21	Specifications	Overall Height		mm		
22	Specifications	Gross Weight		kg	Equals to Operating Weight	
23	Specifications	Shipping Weight		kg		
24	Specifications	Access Clearance Top		mm		
25	Specifications	Access Clearance Bottom		mm		
26	Specifications	Access Clearance Left		mm		
27	Specifications	Access Clearance Right		mm		
28	Specifications	Access Clearance Front		mm		
29	Specifications	Access Clearance Rear		mm		
30	Performance Data					
31	Specifications	Reference Standard		Text		
32	Electrical Data (if required)					
33	Specifications	Incoming Supply Electrical Voltage		Volts		
34	Specifications	Incoming Supply Phase		Number	13	
35	Specifications	Incoming Supply Electrical Frequency		Hertz	50,60	
36	Specifications	Motor Enclosure Rating		Text	IP numbers	
37	Specifications	Motor Type		Text		
38	Specifications	Number of Poles		Number	13	
39	Specifications	Motor Efficiency Class (CEMEP)		Text		
40	Specifications	Starting Method		Text	DoL,Star,Delta,Soft	
41	Controls					
42	Specifications	BMS Links		Y/N		
43	Sustainability					
44	Sustainable Material	Embodied Carbon		kgCO2		
45	Sustainable Material	Life Cycle Analysis		Number	BREEAM	
46	Sustainable Material	Location of Manufacturer		GridRef	North/Easting	
47	Sustainable Material	Green Guide for Specification		Text	A - E	
48	Sustainable Material	Environmental Product Declaration		Text	2nd Party Verification	
49	Sustainable Material	Responsible Sourcing of Materials		Text	Endorsing body	
50	Sustainable Material ETL	URL to Energy Technology List		URL	Hyperlink to ETL webpage for product	
51	Sustainable Material LEED	Responsible Extraction of Materials		Text	TBA	
52	Sustainable Material LEED	Material Ingredient Reporting		Text	TBA	
53	Operations & Maintenance					
54	Facilities/Asset Management	URL to O&M Manual		Text	Hyperlink to Manufacturer O&M Data	
55	Facilities/Asset Management	Daily		Text	Maintenance tasks or SFG2012 codes.	
56	Facilities/Asset Management	Weekly		Text	Maintenance tasks or SFG2012 codes.	
57	Facilities/Asset Management	Monthly		Text	Maintenance tasks or SFG2012 codes.	
58	Facilities/Asset Management	Quarterly		Text	Maintenance tasks or SFG2012 codes.	
59	Facilities/Asset Management	5 Monthly		Text	Maintenance tasks or SFG2012 codes.	
60	Facilities/Asset Management	Annually		Text	Maintenance tasks or SFG2012 codes.	
61	Facilities/Asset Management	Bespoke Timeframe		Text	Maintenance tasks or SFG2012 codes.	
62	Facilities/Asset Management	Maintenance Required: 0-300hrs		Text	Maintenance tasks required during this time frame.	
63	Facilities/Asset Management	Maintenance Required: 301-600hrs		Text	Maintenance tasks required during this time frame.	
64	Facilities/Asset Management	Maintenance Required: 601-1000hrs		Text	Maintenance tasks required during this time frame.	



PDT Classification

Choose a Classification System from the list and apply a Value (optional)

	A	B	C	D	E	F
1	Template Category	Category				
2	Template Version	v.				
3	Category Description	Description				
4	Classification System					
5	Classification	Value				
6	Information Category	Parameter Name	Value	Units	Notes	
7		Manufacturer Data				
8	Specifications	Manufacturer		Text		
9	Specifications	Manufacturer Website		URL		
10	Specifications	Product Range		Text		
11	Specifications	Product Model Number (Code)		Text		
12	Specifications	CE Approval No		Text		
13	Specifications	Product Literature Webpage		URL		
14		Construction Data				
15	Specifications	Type		Text	This is a COBIE field, other fields will be required in final PDTs.	
16	Specifications	Shape		Text	This is a COBIE field, other fields will be required in final PDTs.	
17	Specifications	Material		Text	This is a COBIE field, other fields will be required in final PDTs.	
18		Dimensional Data				
19	Specifications	Overall Length		mm		
20	Specifications	Overall Width		mm		
21	Specifications	Overall Height		mm		
22	Specifications	Gross Weight		kg	Equals to Operating Weight	
23	Specifications	Shipping Weight		kg		
24	Specifications	Access Clearance Top		mm		
25	Specifications	Access Clearance Bottom		mm		
26	Specifications	Access Clearance Left		mm		
27	Specifications	Access Clearance Right		mm		
28	Specifications	Access Clearance Front		mm		
29	Specifications	Access Clearance Rear		mm		
30		Performance Data				
31	Specifications	Reference Standard		Text		
32		Electrical Data (if required)				
33	Specifications	Incoming Supply Electrical Voltage		Volts		
34	Specifications	Incoming Supply Phase		Number	1,3	
35	Specifications	Incoming Supply Electrical Frequency		Hertz	50,60	
36	Specifications	Motor Enclosure Rating		Text	IP numbers	
37	Specifications	Motor Type		Text		
38	Specifications	Number of Poles		Number	1,3	
39	Specifications	Motor Efficiency Class (CEMEP)		Text		
40	Specifications	Starting Method		Text	DOL,Star/Delta, Soft	
41		Controls				
42	Specifications	BMS Links		Y/N		
43		Sustainability				
44	Sustainable Material	Embodied Carbon		kgCO2		
45	Sustainable Material	Life Cycle Analysis		Number	BREEAM	
46	Sustainable Material	Location of Manufacturer		GridRef	North/Easting	
47	Sustainable Material	Green Guide for Specification		Text	A - E	
48	Sustainable Material	Environmental Product Declaration		Text	2nd Party Verification	
49	Sustainable Material	Responsible Sourcing of Materials		Text	Endorsing body	
50	Sustainable Material ETL	URL to Energy Technology List		URL	Hyperlink to ETL webpage for product	
51	Sustainable Material LEED	Responsible Extraction of Materials		Text	TBA	
52	Sustainable Material LEED	Material Ingredient Reporting		Text	TBA	
53		Operations & Maintenance				
54	Facilities/Asset Management	URL to O&M Manual		Text	Hyperlink to Manufacturer O&M Data	
55	Facilities/Asset Management	Daily		Text	Maintenance tasks or SFG2012 codes.	
56	Facilities/Asset Management	Weekly		Text	Maintenance tasks or SFG2012 codes.	
57	Facilities/Asset Management	Monthly		Text	Maintenance tasks or SFG2012 codes.	
58	Facilities/Asset Management	Quarterly		Text	Maintenance tasks or SFG2012 codes.	
59	Facilities/Asset Management	5 Monthly		Text	Maintenance tasks or SFG2012 codes.	
60	Facilities/Asset Management	Annually		Text	Maintenance tasks or SFG2012 codes.	
61	Facilities/Asset Management	Bespoke Timeframe		Text	Maintenance tasks or SFG2012 codes.	
62	Facilities/Asset Management	Maintenance Required: 0-300hrs		Text	Maintenance tasks required during this time frame.	
63	Facilities/Asset Management	Maintenance Required: 301-600hrs		Text	Maintenance tasks required during this time frame.	
64	Facilities/Asset Management	Maintenance Required: 601-1000hrs		Text	Maintenance tasks required during this time frame.	



PDT Headers

Identify any additional Headers required

	A	B	C	D	E	F
1	Template Category	Category				
2	Template Version	v.				
3	Category Description	Description				
4	Classification System					
5	Classification	Value				
6	Information Category	Parameter Name	Value	Units	Notes	
7	Manufacturer Data					
8	Specifications	Manufacturer		Text		
9	Specifications	Manufacturer Website		URL		
10	Specifications	Product Range		Text		
11	Specifications	Product Model Number (Code)		Text		
12	Specifications	CE Approval No		Text		
13	Specifications	Product Literature Webpage		URL		
14	Construction Data					
15	Specifications	Type		Text	This is a COBIE field, other fields will be required in final PDTs.	
16	Specifications	Shape		Text	This is a COBIE field, other fields will be required in final PDTs.	
17	Specifications	Material		Text	This is a COBIE field, other fields will be required in final PDTs.	
18	Dimensional Data					
19	Specifications	Overall Length		mm		
20	Specifications	Overall Width		mm		
21	Specifications	Overall Height		mm		
22	Specifications	Gross Weight		kg	Equals to Operating Weight	
23	Specifications	Shipping Weight		kg		
24	Specifications	Access Clearance Top		mm		
25	Specifications	Access Clearance Bottom		mm		
26	Specifications	Access Clearance Left		mm		
27	Specifications	Access Clearance Right		mm		
28	Specifications	Access Clearance Front		mm		
29	Specifications	Access Clearance Rear		mm		
30	Performance Data					
31	Specifications	Reference Standard		Text		
32	Electrical Data (if required)					
33	Specifications	Incoming Supply Electrical Voltage		Volts		
34	Specifications	Incoming Supply Phase		Number	13	
35	Specifications	Incoming Supply Electrical Frequency		Hertz	50,60	
36	Specifications	Motor Enclosure Rating		Text	IP numbers	
37	Specifications	Motor Type		Text		
38	Specifications	Number of Poles		Number	13	
39	Specifications	Motor Efficiency Class (CEMEP)		Text		
40	Specifications	Starting Method		Text	DoL, Star/Delta, Soft	
41	Controls					
42	Specifications	BMS Links		Y/N		
43	Sustainability					
44	Sustainable Material	Embodied Carbon		kgCO2		
45	Sustainable Material	Life Cycle Analysis		Number	BREEAM	
46	Sustainable Material	Location of Manufacturer		GridRef	North/Easting	
47	Sustainable Material	Green Guide for Specification		Text	A - E	
48	Sustainable Material	Environmental Product Declaration		Text	2nd Party Verification	
49	Sustainable Material	Responsible Sourcing of Materials		Text	Endorsing body	
50	Sustainable Material ETL	URL to Energy Technology List		URL	Hyperlink to ETL webpage for product	
51	Sustainable Material LEED	Responsible Extraction of Materials		Text	TBA	
52	Sustainable Material LEED	Material Ingredient Reporting		Text	TBA	
53	Operations & Maintenance					
54	Facilities/Asset Management	URL to O&M Manual		Text	Hyperlink to Manufacturer O&M Data	
55	Facilities/Asset Management	Daily		Text	Maintenance tasks or SFG2012 codes.	
56	Facilities/Asset Management	Weekly		Text	Maintenance tasks or SFG2012 codes.	
57	Facilities/Asset Management	Monthly		Text	Maintenance tasks or SFG2012 codes.	
58	Facilities/Asset Management	Quarterly		Text	Maintenance tasks or SFG2012 codes.	
59	Facilities/Asset Management	5 Monthly		Text	Maintenance tasks or SFG2012 codes.	
60	Facilities/Asset Management	Annually		Text	Maintenance tasks or SFG2012 codes.	
61	Facilities/Asset Management	Bespoke Timeframe		Text	Maintenance tasks or SFG2012 codes.	
62	Facilities/Asset Management	Maintenance Required: 0-300hrs		Text	Maintenance tasks required during this time frame.	
63	Facilities/Asset Management	Maintenance Required: 301-600hrs		Text	Maintenance tasks required during this time frame.	
64	Facilities/Asset Management	Maintenance Required: 601-1000hrs		Text	Maintenance tasks required during this time frame.	



PDT Fields

List out the Fields that are required to describe the product as a catalogue would.

	A	B	C	D	E	F
1	Template Category	Category				
2	Template Version	v.				
3	Category Description	Description				
4	Classification System					
5	Classification	Value				
6	Information Category	Parameter Name	Value	Units	Notes	
7		Manufacturer Data				
8	Specifications	Manufacturer		Text		
9	Specifications	Manufacturer Website		URL		
10	Specifications	Product Range		Text		
11	Specifications	Product Model Number (Code)		Text		
12	Specifications	CE Approval No		Text		
13	Specifications	Product Literature Webpage		URL		
14		Instruction Data				
15	Specifications	Type		Text	This is a COBie field, other fields will be required in final PDTs.	
16	Specifications	Shape		Text	This is a COBie field, other fields will be required in final PDTs.	
17	Specifications	Material		Text	This is a COBie field, other fields will be required in final PDTs.	
18		Dimensional Data				
19	Specifications	Length		mm		
20	Specifications	Width		mm		
21	Specifications	Height		mm		
22	Specifications	Gross Weight		kg	Equals to Operating Weight	
23	Specifications	Shipping Weight		kg		
24	Specifications	Access Clearance Top		mm		
25	Specifications	Access Clearance Bottom		mm		
26	Specifications	Access Clearance Left		mm		
27	Specifications	Access Clearance Right		mm		
28	Specifications	Access Clearance Front		mm		
29	Specifications	Access Clearance Rear		mm		
30		Performance Data				
31	Specifications	Reference Standard		Text		
32		Electrical Data (if required)				
33	Specifications	Incoming Supply Electrical Voltage		Volts		
34	Specifications	Incoming Supply Phase		Number	13	
35	Specifications	Incoming Supply Electrical Frequency		Hertz	50,60	
36	Specifications	Motor Enclosure Rating		Text	IP numbers	
37	Specifications	Motor Type		Text		
38	Specifications	Number of Poles		Number	13	
39	Specifications	Motor Efficiency Class (CEMEP)		Text		
40	Specifications	Starting Method		Text	DoL,Star,Delta, Soft	
41		Controls				
42	Specifications	BMS Links		Y/N		
43		Sustainability				
44	Sustainable Material	Embodied Carbon		kgCO2		
45	Sustainable Material	Life Cycle Analysis		Number	BREEAM	
46	Sustainable Material	Location of Manufacturer		GridRef	North/Easting	
47	Sustainable Material	Green Guide for Specification		Text	A - E	
48	Sustainable Material	Environmental Product Declaration		Text	2nd Party Verification	
49	Sustainable Material	Responsible Sourcing of Materials		Text	Endorsing body	
50	Sustainable Material ETL	URL to Energy Technology List		URL	Hyperlink to ETL webpage for product	
51	Sustainable Material LEED	Responsible Extraction of Materials		Text	TBA	
52	Sustainable Material LEED	Material Ingredient Reporting		Text	TBA	
53		Operations & Maintenance				
54	Facilities/Asset Management	URL to O&M Manual		Text	Hyperlink to Manufacturer O&M Data	
55	Facilities/Asset Management	Daily		Text	Maintenance tasks or SFG2012 codes.	
56	Facilities/Asset Management	Weekly		Text	Maintenance tasks or SFG2012 codes.	
57	Facilities/Asset Management	Monthly		Text	Maintenance tasks or SFG2012 codes.	
58	Facilities/Asset Management	Quarterly		Text	Maintenance tasks or SFG2012 codes.	
59	Facilities/Asset Management	5 Monthly		Text	Maintenance tasks or SFG2012 codes.	
60	Facilities/Asset Management	Annually		Text	Maintenance tasks or SFG2012 codes.	
61	Facilities/Asset Management	Bespoke Timeframe		Text	Maintenance tasks or SFG2012 codes.	
62	Facilities/Asset Management	Maintenance Required: 0-300hrs		Text	Maintenance tasks required during this time frame.	
63	Facilities/Asset Management	Maintenance Required: 301-600hrs		Text	Maintenance tasks required during this time frame.	
64	Facilities/Asset Management	Maintenance Required: 601-1000hrs		Text	Maintenance tasks required during this time frame.	



PDT Notes

Add some Notes to help populate the fields.

	A	B	C	D	E	F
1	Template Category	Category				
2	Template Version	v.				
3	Category Description	Description				
4	Classification System					
5	Classification	Value				
6	Information Category	Parameter Name	Value	Units	Notes	
7	Manufacturer Data					
8	Specifications	Manufacturer		Text		
9	Specifications	Manufacturer Website		URL		
10	Specifications	Product Range		Text		
11	Specifications	Product Model Number (Code)		Text		
12	Specifications	CE Approval No.		Text		
13	Specifications	Product Literature Webpage		URL		
14	Construction Data					
15	Specifications	Type		Text		This is a COBie field, other fields will be required in final PDTs.
16	Specifications	Shape		Text		This is a COBie field, other fields will be required in final PDTs.
17	Specifications	Material		Text		This is a COBie field, other fields will be required in final PDTs.
18	Dimensional Data					
19	Specifications	Overall Length		mm		
20	Specifications	Overall Width		mm		
21	Specifications	Overall Height		mm		
22	Specifications	Gross Weight		kg		Equals to Operating Weight
23	Specifications	Shipping Weight		kg		
24	Specifications	Access Clearance Top		mm		
25	Specifications	Access Clearance Bottom		mm		
26	Specifications	Access Clearance Left		mm		
27	Specifications	Access Clearance Right		mm		
28	Specifications	Access Clearance Front		mm		
29	Specifications	Access Clearance Rear		mm		
30	Performance Data					
31	Specifications	Reference Standard		Text		
32	Electrical Data (if required)					
33	Specifications	Incoming Supply Electrical Voltage		Volts		
34	Specifications	Incoming Supply Phase		Number	13	
35	Specifications	Incoming Supply Electrical Frequency		Hertz	50,60	
36	Specifications	Motor Enclosure Rating		Text		IP numbers
37	Specifications	Motor Type		Text		
38	Specifications	Number of Poles		Number	13	
39	Specifications	Motor Efficiency Class (CEMEP)		Text		
40	Specifications	Starting Method		Text		DoL, Star/Delta, Soft
41	Controls					
42	Specifications	BMS Links		Y/N		
43	Sustainability					
44	Sustainable Material	Embodied Carbon		kgCO2		
45	Sustainable Material	Life Cycle Analysis		Number	BREEAM	
46	Sustainable Material	Location of Manufacturer		GridRef	North/Easting	
47	Sustainable Material	Green Guide for Specification		Text	A - E	
48	Sustainable Material	Environmental Product Declaration		Text	2nd Party Verification	
49	Sustainable Material	Responsible Sourcing of Materials		Text	Endorsing body	
50	Sustainable Material ETL	URL to Energy Technology List		URL	Hyperlink to ETL webpage for product	
51	Sustainable Material LEED	Responsible Extraction of Materials		Text	TBA	
52	Sustainable Material LEED	Material Ingredient Reporting		Text	TBA	
53	Operations & Maintenance					
54	Facilities/Asset Management	URL to O&M Manual		Text		Hyperlink to Manufacturer O&M Data
55	Facilities/Asset Management	Daily		Text		Maintenance tasks or SFG2012 codes.
56	Facilities/Asset Management	Weekly		Text		Maintenance tasks or SFG2012 codes.
57	Facilities/Asset Management	Monthly		Text		Maintenance tasks or SFG2012 codes.
58	Facilities/Asset Management	Quarterly		Text		Maintenance tasks or SFG2012 codes.
59	Facilities/Asset Management	5 Monthly		Text		Maintenance tasks or SFG2012 codes.
60	Facilities/Asset Management	Annually		Text		Maintenance tasks or SFG2012 codes.
61	Facilities/Asset Management	Bespoke Timeframe		Text		Maintenance tasks or SFG2012 codes.
62	Facilities/Asset Management	Maintenance Required: 0-300hrs		Text		Maintenance tasks required during this time frame.
63	Facilities/Asset Management	Maintenance Required: 301-600hrs		Text		Maintenance tasks required during this time frame.
64	Facilities/Asset Management	Maintenance Required: 601-1000hrs		Text		Maintenance tasks required during this time frame.



PDT Units

Identify the Units of Measurement for each field.

	A	B	C	D	E	F
1	Template Category	Category				
2	Template Version	v.				
3	Category Description	Description				
4	Classification System					
5	Classification	Value				
6	Information Category	Parameter Name	Value	Units	Notes	
7	Manufacturer Data					
8	Specifications	Manufacturer		Text		
9	Specifications	Manufacturer Website		URL		
10	Specifications	Product Range		Text		
11	Specifications	Product Model Number (Code)		Text		
12	Specifications	CE Approval No		Text		
13	Specifications	Product Literature Webpage		URL		
14	Construction Data					
15	Specifications	Type		Text	This is a COBIE field, other fields will be required in final PDTs.	
16	Specifications	Shape		Text	This is a COBIE field, other fields will be required in final PDTs.	
17	Specifications	Material		Text	This is a COBIE field, other fields will be required in final PDTs.	
18	Dimensional Data					
19	Specifications	Overall Length		m		
20	Specifications	Overall Width		m		
21	Specifications	Overall Height		m		
22	Specifications	Gross Weight		kg	Equals to Operating Weight	
23	Specifications	Shipping Weight		kg		
24	Specifications	Access Clearance Top		mm		
25	Specifications	Access Clearance Bottom		mm		
26	Specifications	Access Clearance Left		mm		
27	Specifications	Access Clearance Right		mm		
28	Specifications	Access Clearance Front		mm		
29	Specifications	Access Clearance Rear		mm		
30	Performance Data					
31	Specifications	Reference Standard		Text		
32	Electrical Data (if required)					
33	Specifications	Incoming Supply Electrical Voltage		Volts		
34	Specifications	Incoming Supply Phase		Number	1,3	
35	Specifications	Incoming Supply Electrical Frequency		Hertz	50,60	
36	Specifications	Motor Enclosure Rating		Text	IP numbers	
37	Specifications	Motor Type		Text		
38	Specifications	Number of Poles		Number	1,3	
39	Specifications	Motor Efficiency Class (CEMEP)		Text		
40	Specifications	Starting Method		Text	DOL,Star,Delta,Soft	
41	Controls					
42	Specifications	BMS Links		Y/N		
43	Sustainability					
44	Sustainable Material	Embodied Carbon		kgCO2		
45	Sustainable Material	Life Cycle Analysis		Number	BREEAM	
46	Sustainable Material	Location of Manufacturer		GridRef	North,East,West	
47	Sustainable Material	Green Guide for Specification		Text	A - E	
48	Sustainable Material	Environmental Product Declaration		Text	2nd Party Verification	
49	Sustainable Material	Responsible Sourcing of Materials		Text	Endorsing body	
50	Sustainable Material ETL	URL to Energy Technology List		URL	Hyperlink to ETL webpage for product	
51	Sustainable Material LEED	Responsible Extraction of Materials		Text	TBA	
52	Sustainable Material LEED	Material Ingredient Reporting		Text	TBA	
53	Operations & Maintenance					
54	Facilities/Asset Management	URL to O&M Manual		Text	Hyperlink to Manufacturer O&M Data	
55	Facilities/Asset Management	Daily		Text	Maintenance tasks or SFG2012 codes.	
56	Facilities/Asset Management	Weekly		Text	Maintenance tasks or SFG2012 codes.	
57	Facilities/Asset Management	Monthly		Text	Maintenance tasks or SFG2012 codes.	
58	Facilities/Asset Management	Quarterly		Text	Maintenance tasks or SFG2012 codes.	
59	Facilities/Asset Management	5 Monthly		Text	Maintenance tasks or SFG2012 codes.	
60	Facilities/Asset Management	Annually		Text	Maintenance tasks or SFG2012 codes.	
61	Facilities/Asset Management	Bespoke Timeframe		Text	Maintenance tasks or SFG2012 codes.	
62	Facilities/Asset Management	Maintenance Required: 0-300hrs		Text	Maintenance tasks required during this time frame.	
63	Facilities/Asset Management	Maintenance Required: 301-600hrs		Text	Maintenance tasks required during this time frame.	
64	Facilities/Asset Management	Maintenance Required: 601-1000hrs		Text	Maintenance tasks required during this time frame.	



PDT Construction

Maintenance tasks:

Identify SFG2012 code (if applicable)

61	Facilities/Asset Management	Bespoke Timeframe
62	Facilities/Asset Management	Maintenance Required: 0-300hrs
63	Facilities/Asset Management	Maintenance Required: 301-600hrs
64	Facilities/Asset Management	Maintenance Required: 601-1000hrs

Ready | Template | SFG2012 | SPie Attributes

	A	B	C
1	SFG2012 Code	Action	Criticality
2	43_02_01	Refer to SFG2012	
3	43_02_01S	Manufacturer maintenance requirements.	
4			
5			
6			



PDT Construction

SPIe attributes

Paste in the Attributes tab from the SPIe spreadsheet (if available) and ensure that any non-project specific attributes are covered by the PDT fields.

61	Facilities/Asset Management	Bespoke Timeframe
62	Facilities/Asset Management	Maintenance Required: 0-300hrs
63	Facilities/Asset Management	Maintenance Required: 301-600hrs
64	Facilities/Asset Management	Maintenance Required: 601-1000hrs

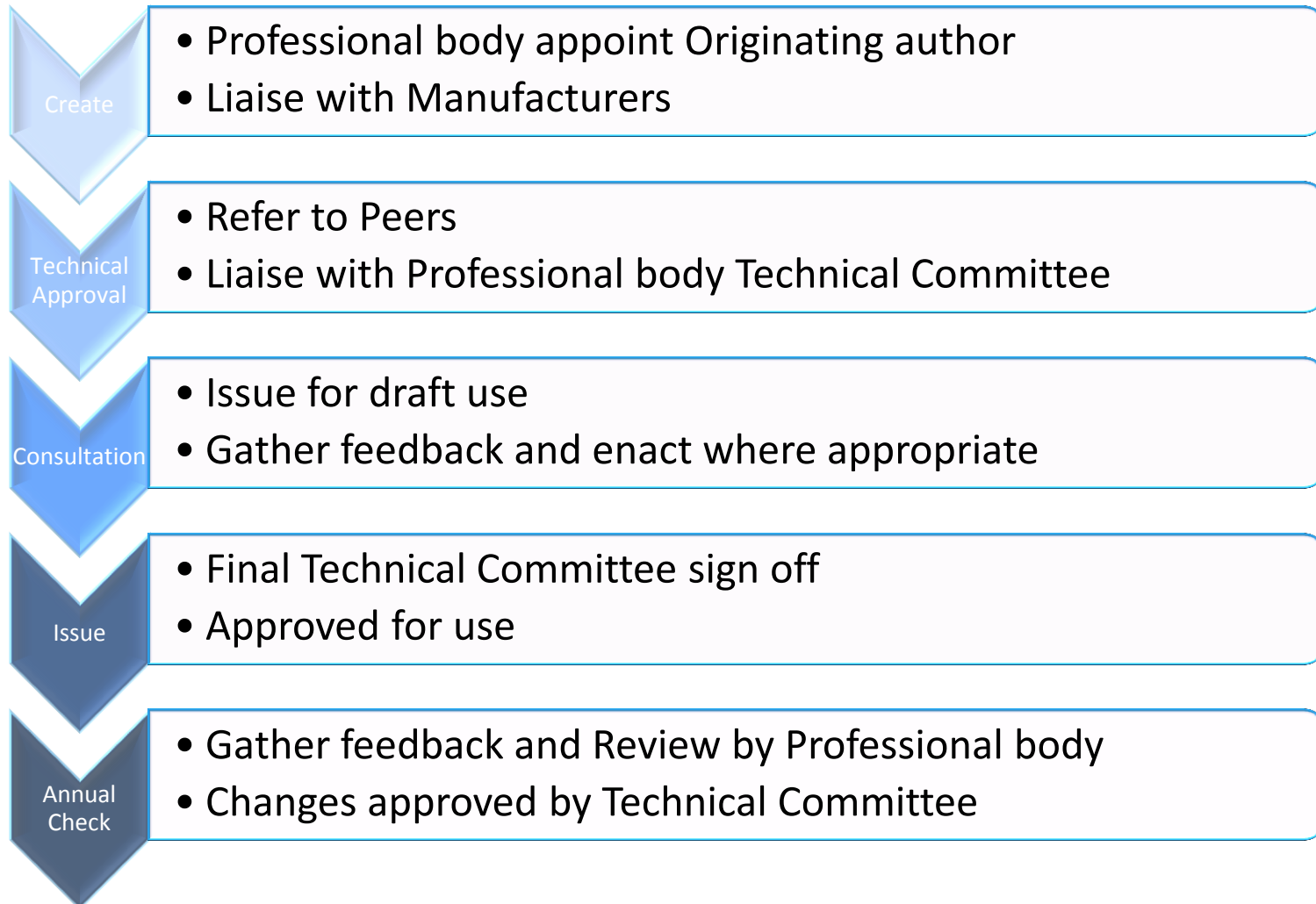
Ready | Template | SFG2012 | SPIe Attributes

Name	Value	Unit	Description	AllowedValues
AcquisitionDate	2012-02-11T14:11:48	n/a	The date that the manufacturer	n/a
AirDiffusionPerformanceIndex	0	n/a	The Air Diffusion Performance Index	n/a
AirFlowRateRange	0. , , 0.	n/a	Air flowrate range within which	n/a
AirFlowRateVersusFlowControlElement	(n/a , (n/a	Air flowrate versus flow control	n/a
AirFlowType	unset	enumeration	Enumeration defining the function of the air terminal: supplyair, returnair, exhaustair, other, notknown, unset	
AssemblyPlace	unset	enumeration	Enumeration defining where the air terminal is located: factory, offsite, site, other, notknown, unset	
BatchReference	n/a	n/a	The identity of the batch reference	n/a
CoreSetHorizontal	0	n/a	Degree of horizontal (in the X-axis)	n/a
CoreSetVertical	0	n/a	Degree of vertical (in the Y-axis)	n/a
CoreType	unset	enumeration	Identifies the way the core of the air terminal is constructed: shutterblade, curvedblade, removable, reversible, none, other, notknown, unset	
DischargeDirection	unset	enumeration	Discharge direction of the air terminal: parallel, perpendicular, adjustable, other, notknown, unset	
Documentation	http://www.buildingSMART.org/	n/a	Location (Uniform Resource Identifier)	n/a
DocumentReference	http://www.buildingSMART.org/	n/a	Location (Uniform Resource Identifier)	n/a
EffectiveArea	0	n/a	Effective discharge area of the air terminal	n/a
ElementType	GRILLE: A covering for an opening	n/a	ElementType	n/a
ElevationWithFlooring	0	millimeters	ElevationWithFlooring	n/a
FaceType	unset	enumeration	Identifies how the terminal face is constructed: fourwaypattern, singledeflection, doubledeflection, sightproof, eggcrate, perforated, other, notknown, unset	
FinishColor	n/a	n/a	The finish color for the air terminal	n/a
FinishType	unset	enumeration	The type of finish for the air terminal: anodized, painted, none, other, notknown, unset	
FlowControlType	unset	enumeration	Type of flow control element: damper, bellows, none, other, notknown, unset	
FlowPattern	unset	enumeration	Flow pattern: linearsingle, lineardouble, linearfourway, radial, swirl, displacement, compactjet, other, notknown, unset	
GrossWeight	0	mass	Weight of the element.	n/a
HasIntegralControl	false	boolean	If TRUE, a self powered temperature control is provided	true, false
HasSoundAttenuator	false	boolean	If TRUE, the air terminal has sound attenuation	true, false
HasThermalInsulation	false	boolean	If TRUE, the air terminal has thermal insulation	true, false
IfcExportAs	IfcAirTerminalType	n/a	Mapping to IFC Type Product	n/a
IfcExportType	GRILLE	n/a	Mapping to IFC Predefined Type	n/a
InteriorOrExteriorSpace	Internal	n/a	InteriorOrExteriorSpace	n/a
Location	unset	enumeration	Location (a single type of diffusion): sidewallhigh, sidewalllow, ceilingperimeter, ceilinginterior, floor, sill, other, notknown, unset	
MethodOfMeasurement	UK Product Template	n/a	Method of measurement	n/a
MountingType	unset	enumeration	The way the air terminal is mounted: surface, flatflush, layin, other, notknown, unset	
NeckArea	0	n/a	Neck area of the air terminal.	n/a
NumberOfSlots	0	n/a	Number of slots.	n/a
ObjectType	GRILLE	n/a	ObjectType	n/a
Perimeter	0	millimeters	Perimeter of the air terminal face	n/a
PredefinedType	grille	n/a	PredefinedType	n/a
Process	Replacement at service	n/a	Specification of process	n/a
Reference	n/a	n/a	Reference ID for this specified type	n/a
ReferenceStandard	NotDefined	n/a	Reference standard(s) to which the element conforms	n/a
RefLatitude	24, 28, 0	n/a	RefLatitude	n/a



Quality Assurance

Consultation and Approval process:



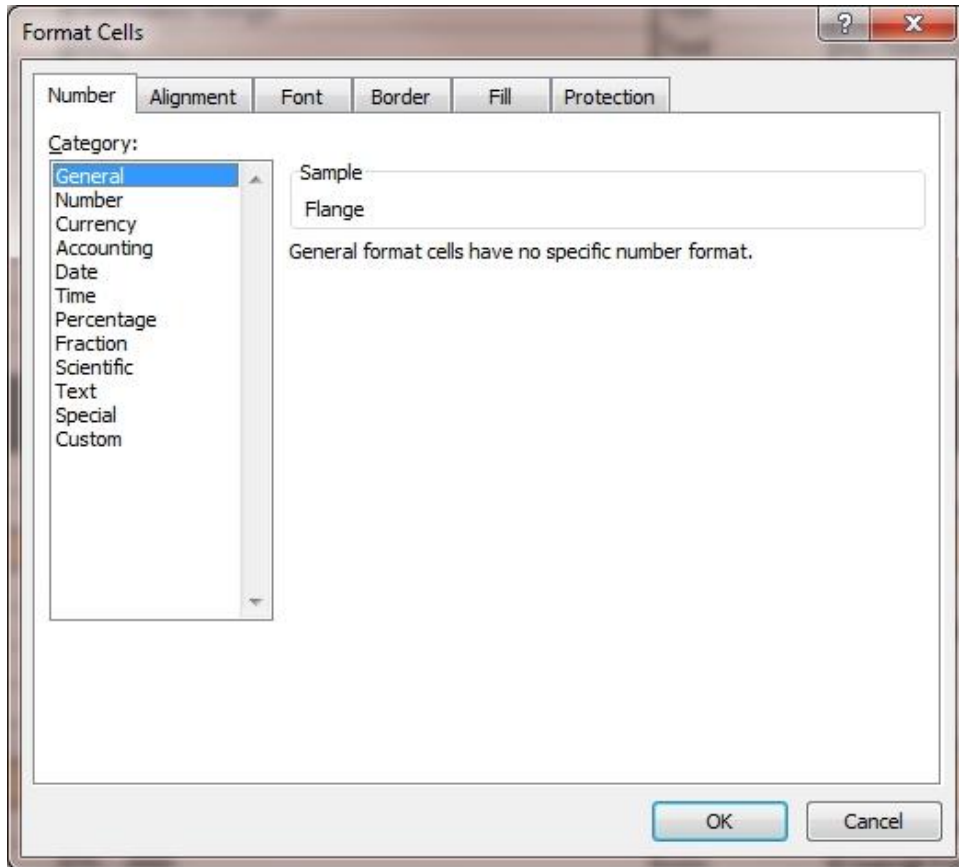


While many other spreadsheet programs are available and may be used in creating PDTs, here are a few tips and tricks to use in Excel in writing them.



EXCEL TIPS AND TRICKS

Limit format of responses



To limit the responses to a single data format, such as a number, or a percentage, you can format the cell to only accept this kind of data.

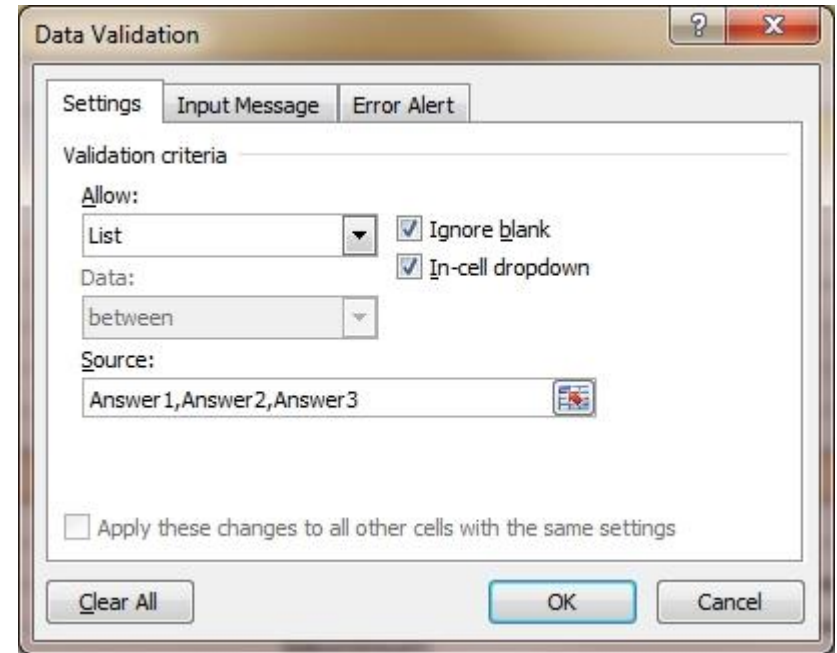
Remember that if the response could be either a range (1, ,3) or a list (1,2,3), the format has to be General.



EXCEL TIPS AND TRICKS

Drop down lists

If the responses are to be from a list and only from that list i.e. no other response is possible, then you can use Data Validation (under the Data tab) to achieve this.

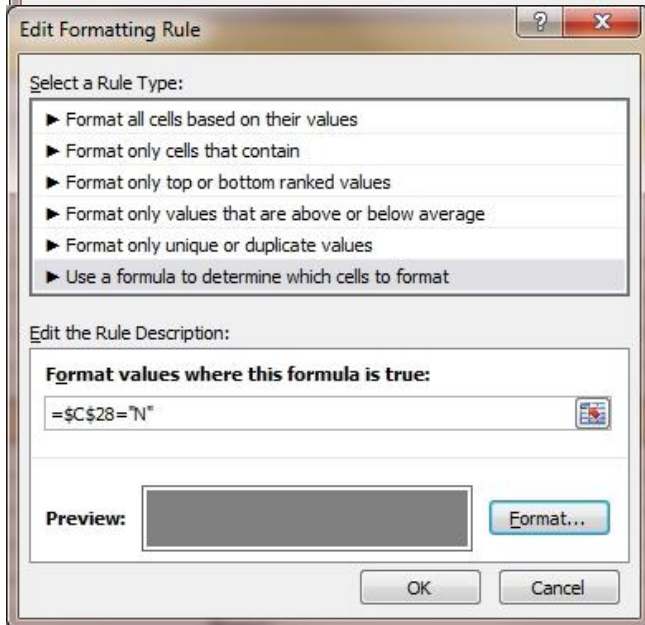


Unset	Enumeration	
Rectangular	Enumeration	
Round	Text	eg
Rectangular	Text	eg
Square	Text	eg
Slot	Text	eg
Other	Text	eg
NotKnown	Text	eg
Unset	Text	eg
Unset	Enumeration	
aluminium	Text	eg
...	Text	eg



EXCEL TIPS AND TRICKS

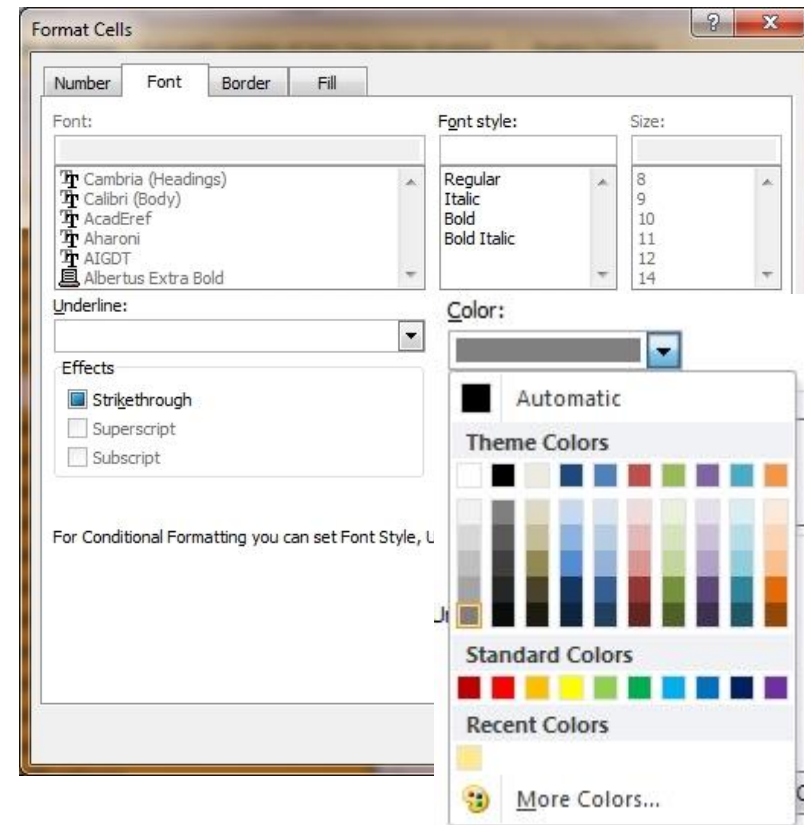
Grey out rows



Colour the cell and the text font to grey in the formatting options, this has the effect of “Greying out” the cells.

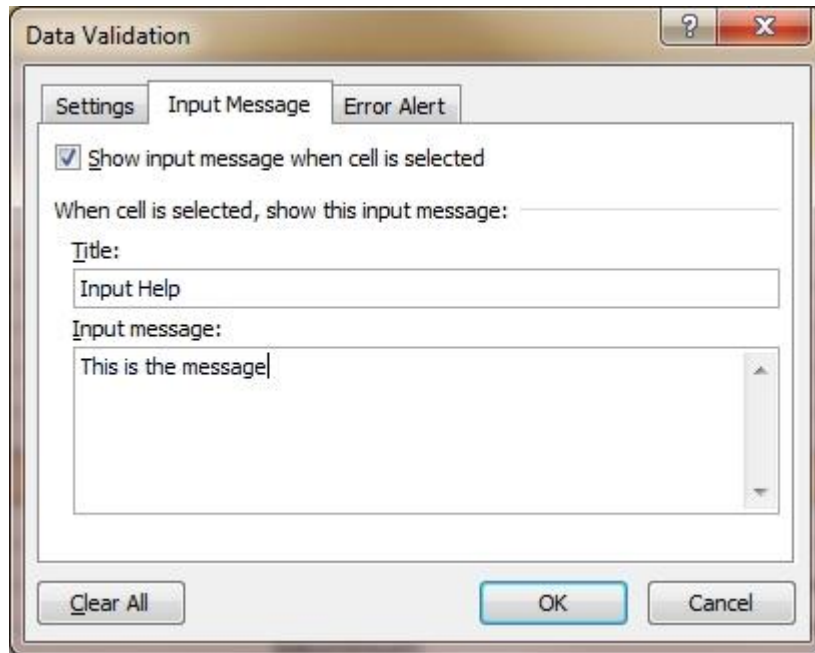
To grey out rows in response to an answer made elsewhere; highlight some or all of the cells affected and, using the Conditional Formatting option, apply a new rule.

This works best if the trigger cell has a drop down list of options.



EXCEL TIPS AND TRICKS

Mouse-over help



To make a help message appear when the users mouse clicks on a cell, use Data Validation and select the Input Message option

This is how it looks:

Rectangular	Enumeration	
Flange	Text	eg
aluminium	Text	eg
concealed fixings	Text	eg
PPC	Text	eg
RAL 9010 20%	Text	eg
Unset	Enumeration	
aluminium	Text	eg

Input Help
This is the message

